

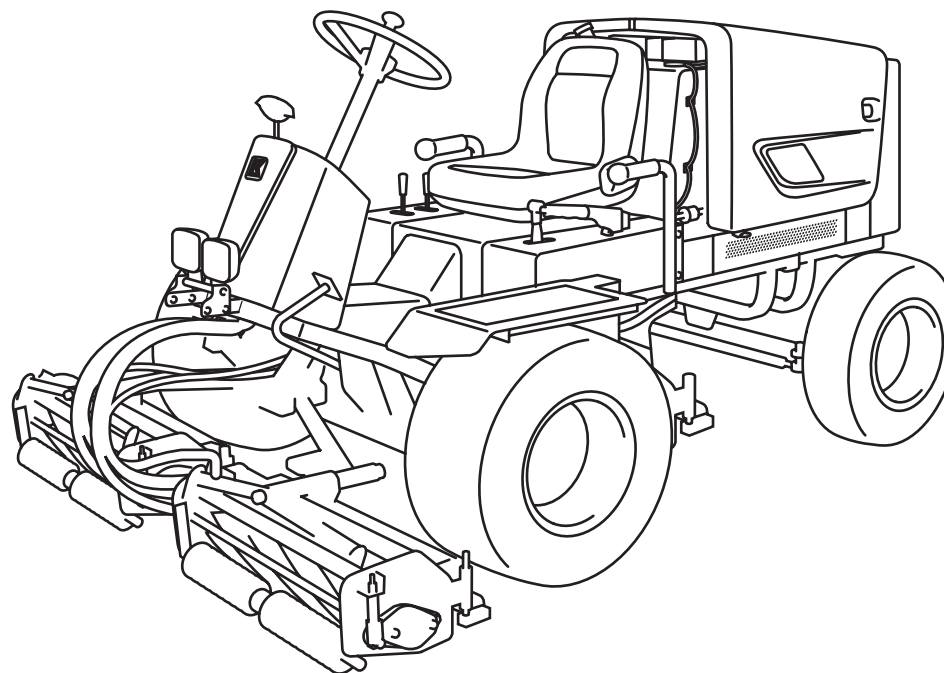
**BARONNESS**<sup>®</sup>

Reel Mower

**LM283**

3-Reel Gang Rough Mowers

## Parts catalog



BEVATTNINGSTEKNIK AB  
Helsingborgsvägen 578, Varalöv  
262 96 ÄNGELHOLM, SWEDEN

Telefon: +46 431 22250  
Email : [info@bevattningsteknik.se](mailto:info@bevattningsteknik.se) eller [philip@bevattningsteknik.se](mailto:philip@bevattningsteknik.se)  
[www.bevattningsteknik.se](http://www.bevattningsteknik.se)

# Contents

PARTS CATALOGUE .....	2
101. Frame parts .....	3
102. Cover parts (Front) .....	5
103. Cover parts (Rear) .....	7
104. Front wheel parts.....	9
105. Rear wheel parts .....	11
106. Pedal parts .....	13
107. Engine parts .....	15
108. Radiator parts .....	19
109. Hydraulic parts A(Cylinder system) .....	23
110. Hydraulic parts A(Power steering system) .....	25
111. Hydraulic parts B (Reel motor system).....	27
112. Hydraulic parts C (Front wheel motor system) .....	29
113. Hydraulic parts C (Rear wheel motor system).....	33
114. Mower lift arm parts.....	35
115. Mower parts (#1) .....	37
116. Mower parts (#2) .....	39
117. Mower parts (#3) .....	41
118. Wheel parts .....	43
119. Roller Ass'y parts .....	45
120. Accessory parts.....	47
121. Option (Grass catcher parts) .....	49
122. Option.....	51

## Greeting

Thank you for purchasing Baroness machine.  
We hope you will use the machine safely, and take advantage of its best performance.

(For inquiry about this machine)

Since the type of machine may be changed sequentially, inform us of the type and the serial number.

### Note

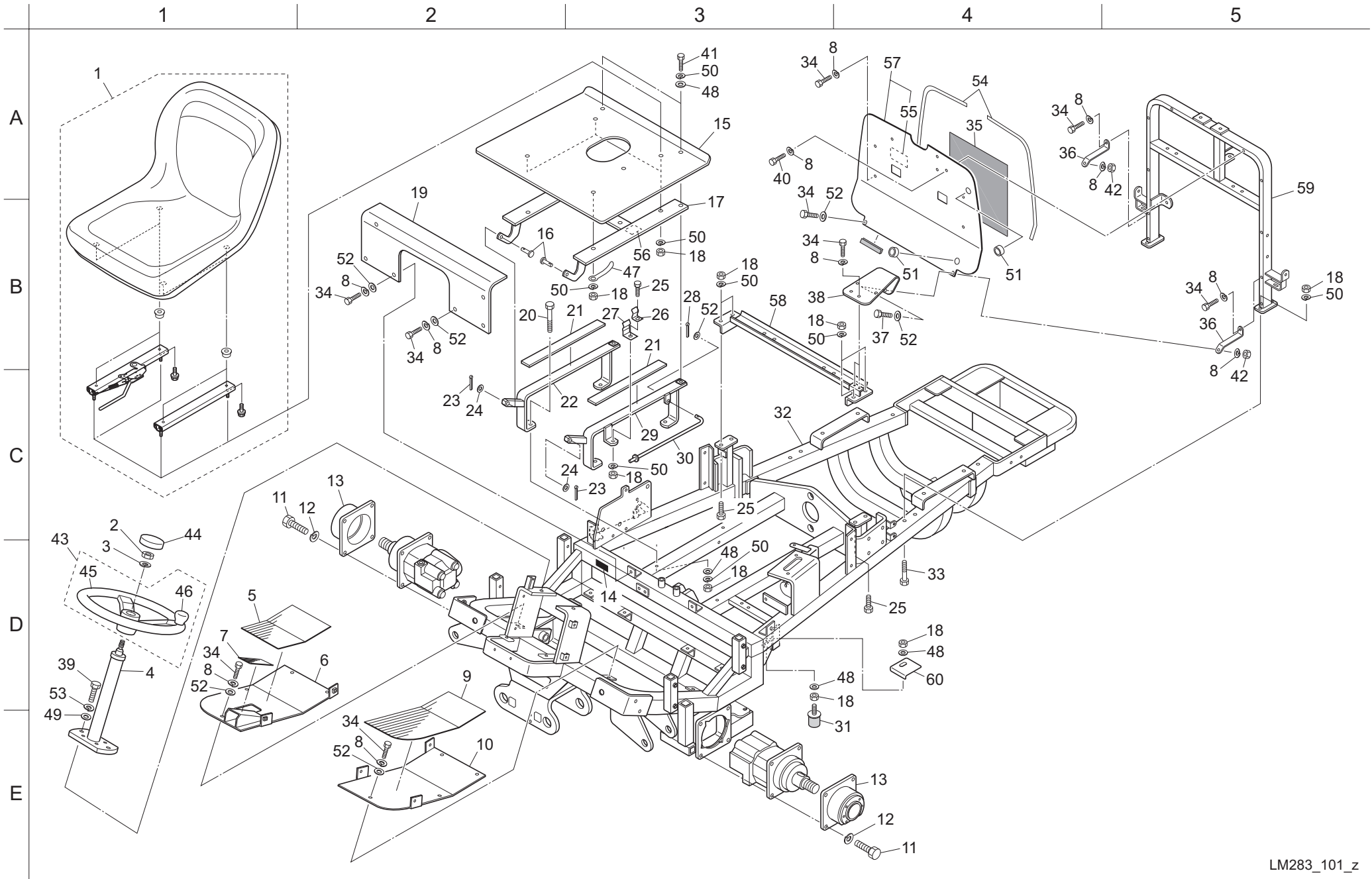
The information described in this manual is subject to change without prior notice. Note that the Baroness product warranty may not apply to defects caused by the use of parts from other companies.

(For ordering parts)

For prevention of delivery of wrong parts, be sure to inform us of the code number and the part name.

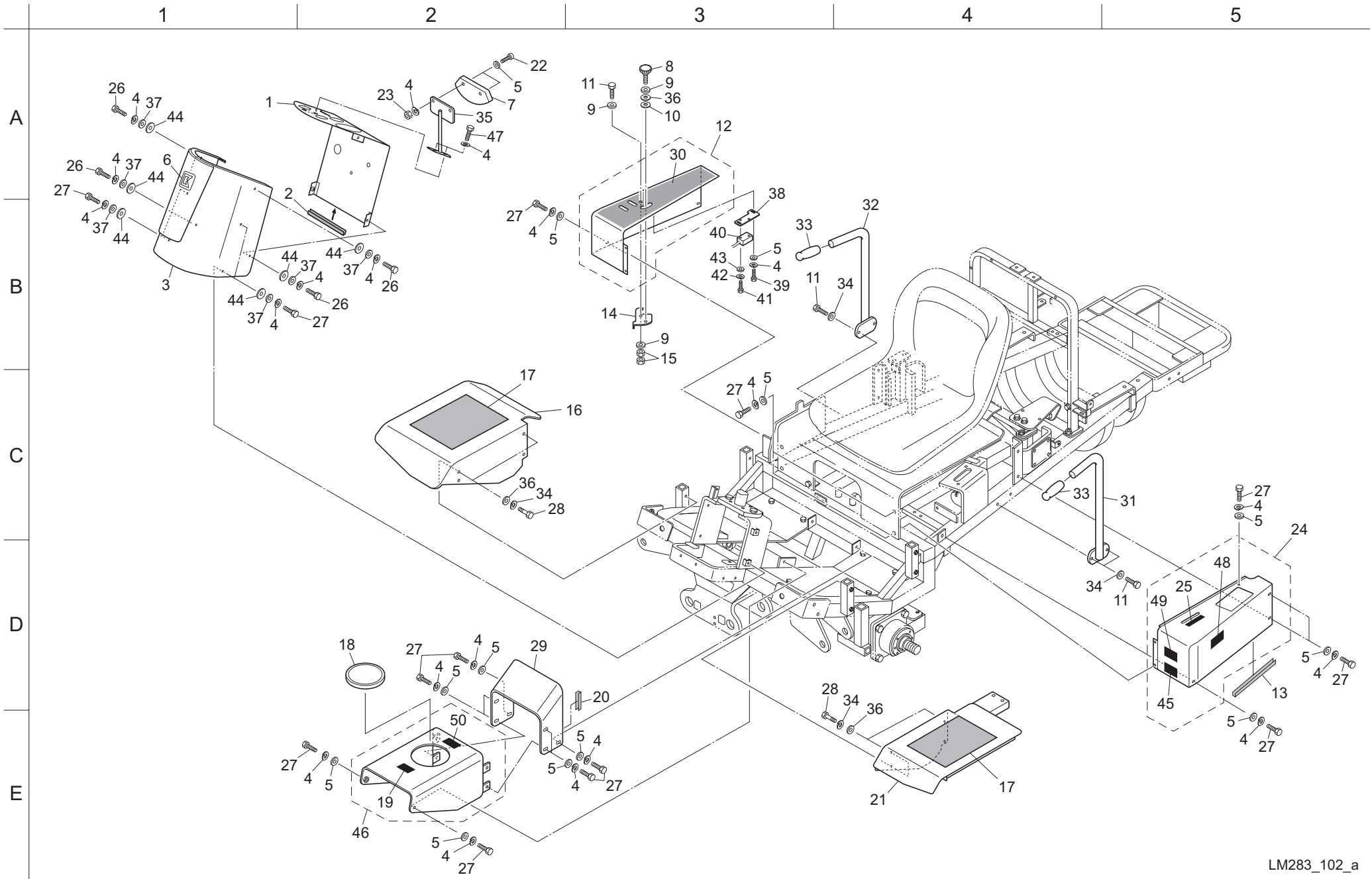
Example:	Code No.	Part Name	Qty
	LM283--0601ZD	FRAME	1

101. Frame parts





102. Cover parts (Front)



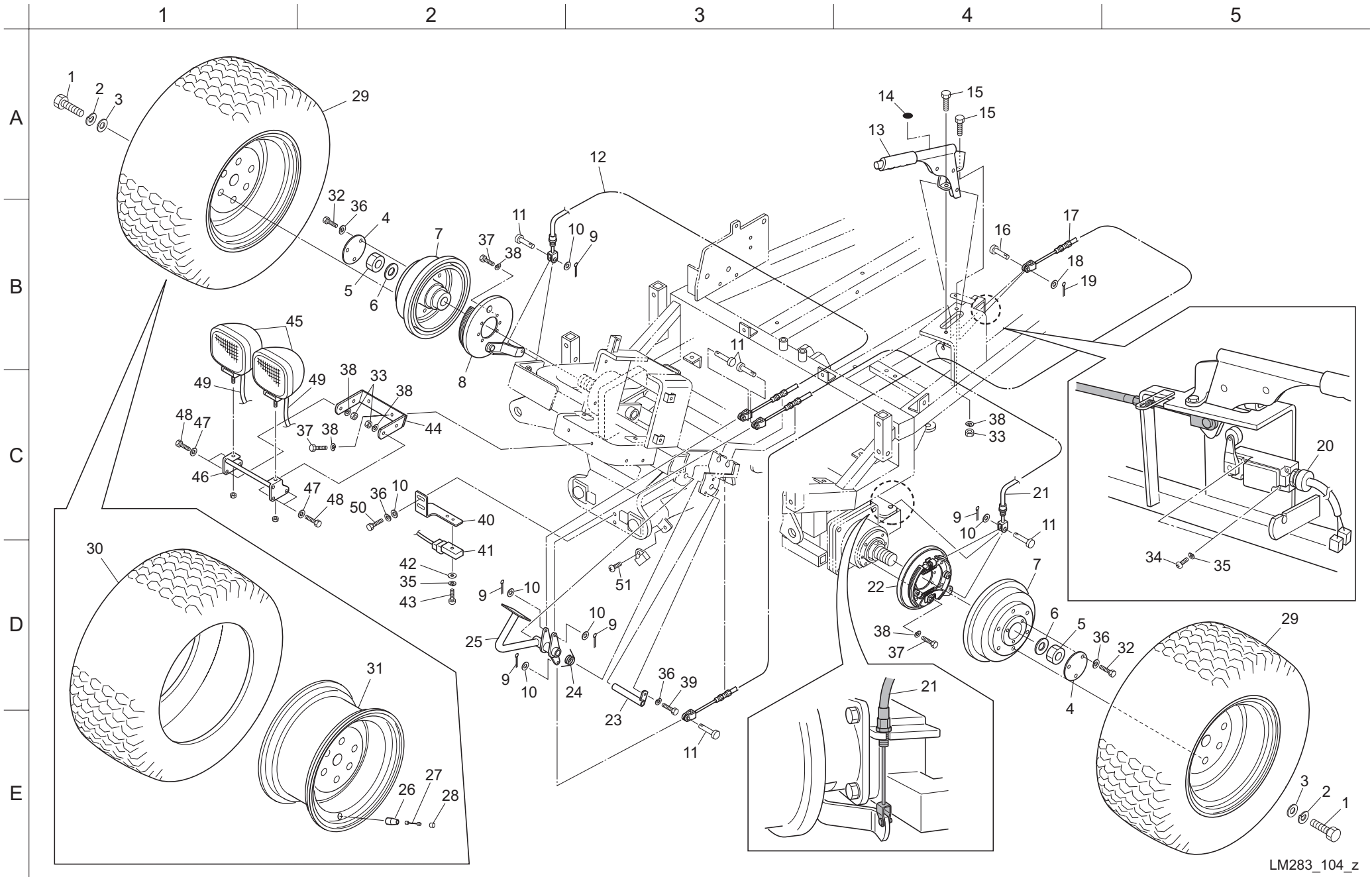






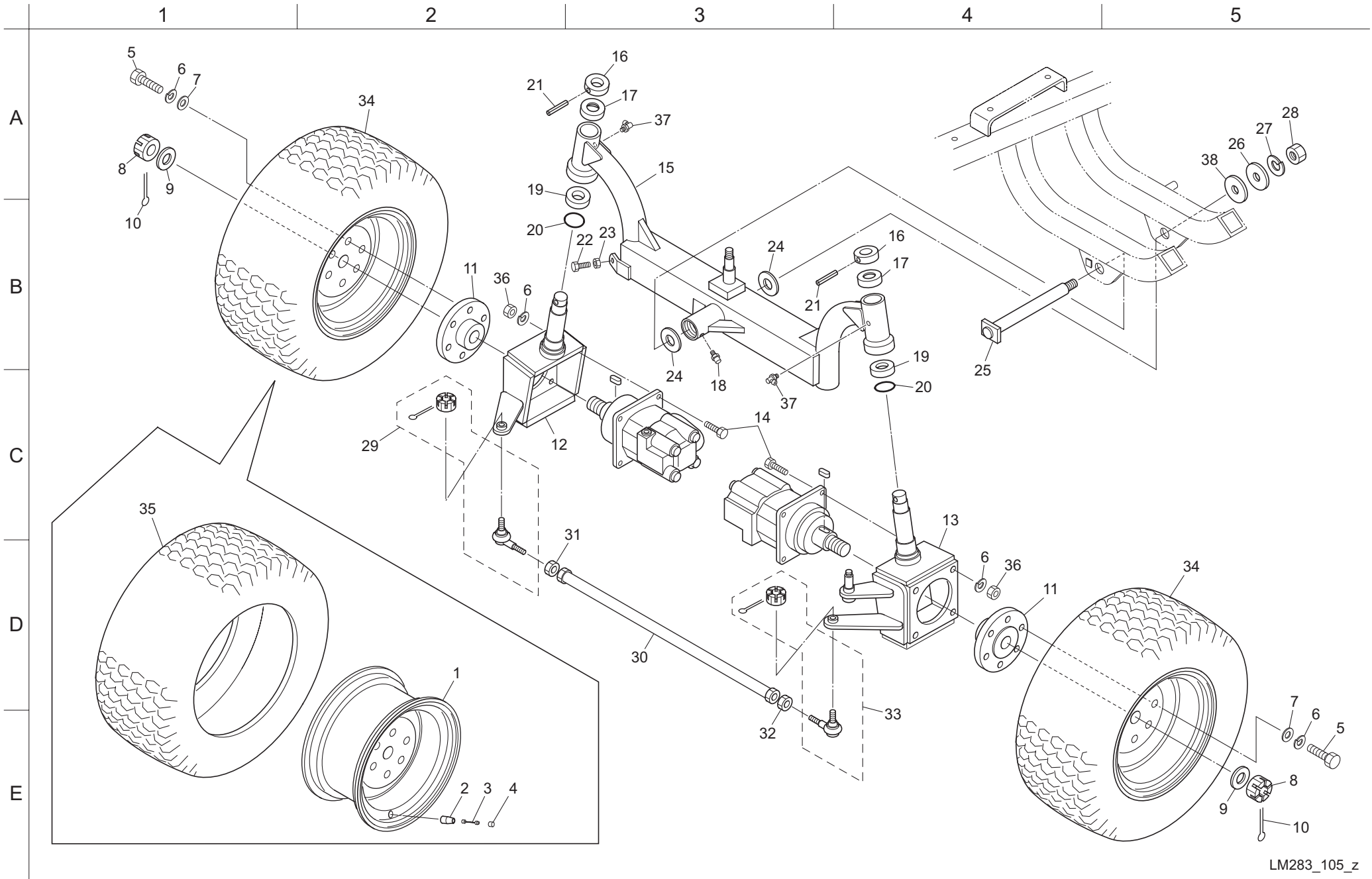


# 104. Front wheel parts



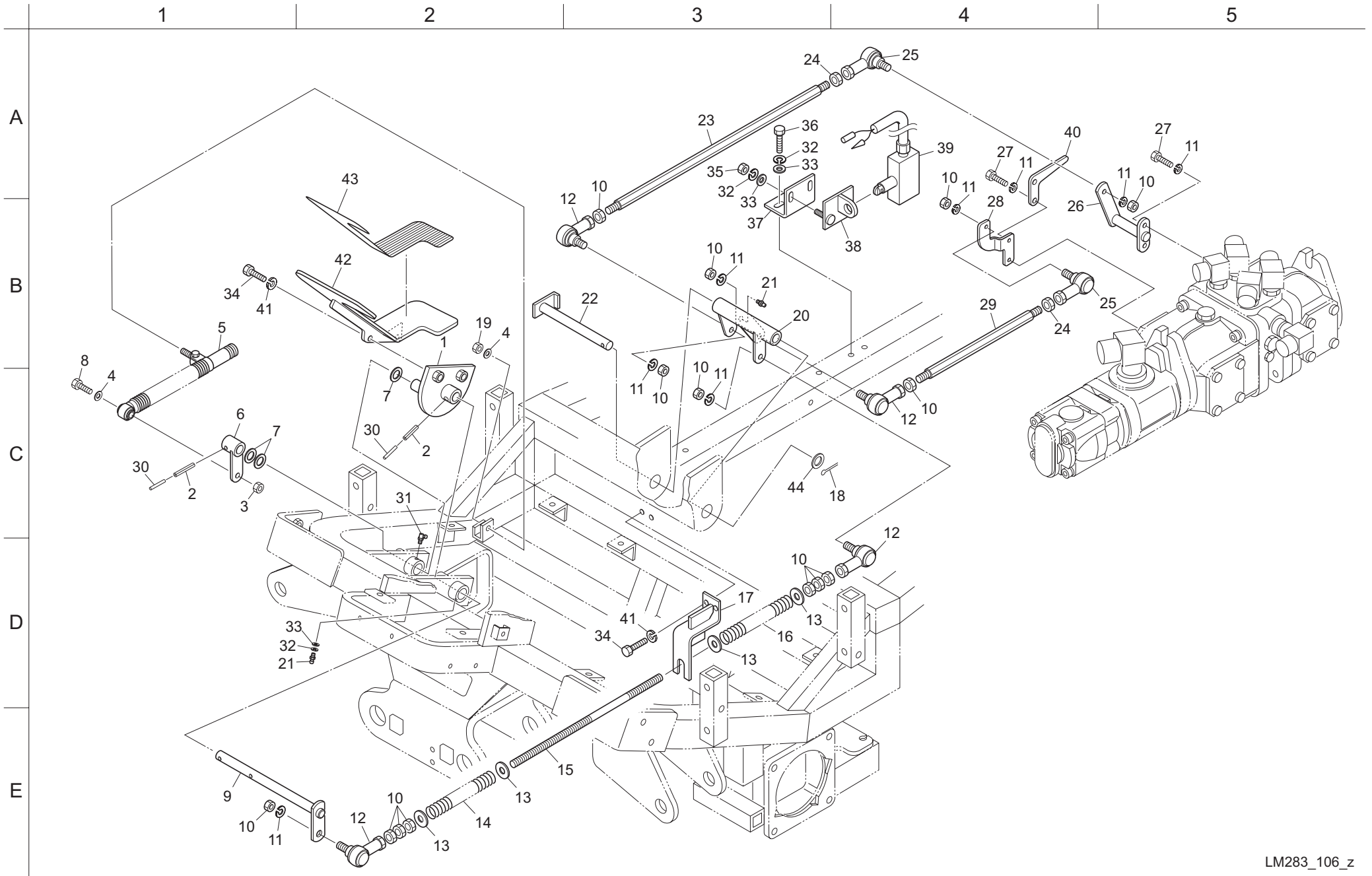


105. Rear wheel parts



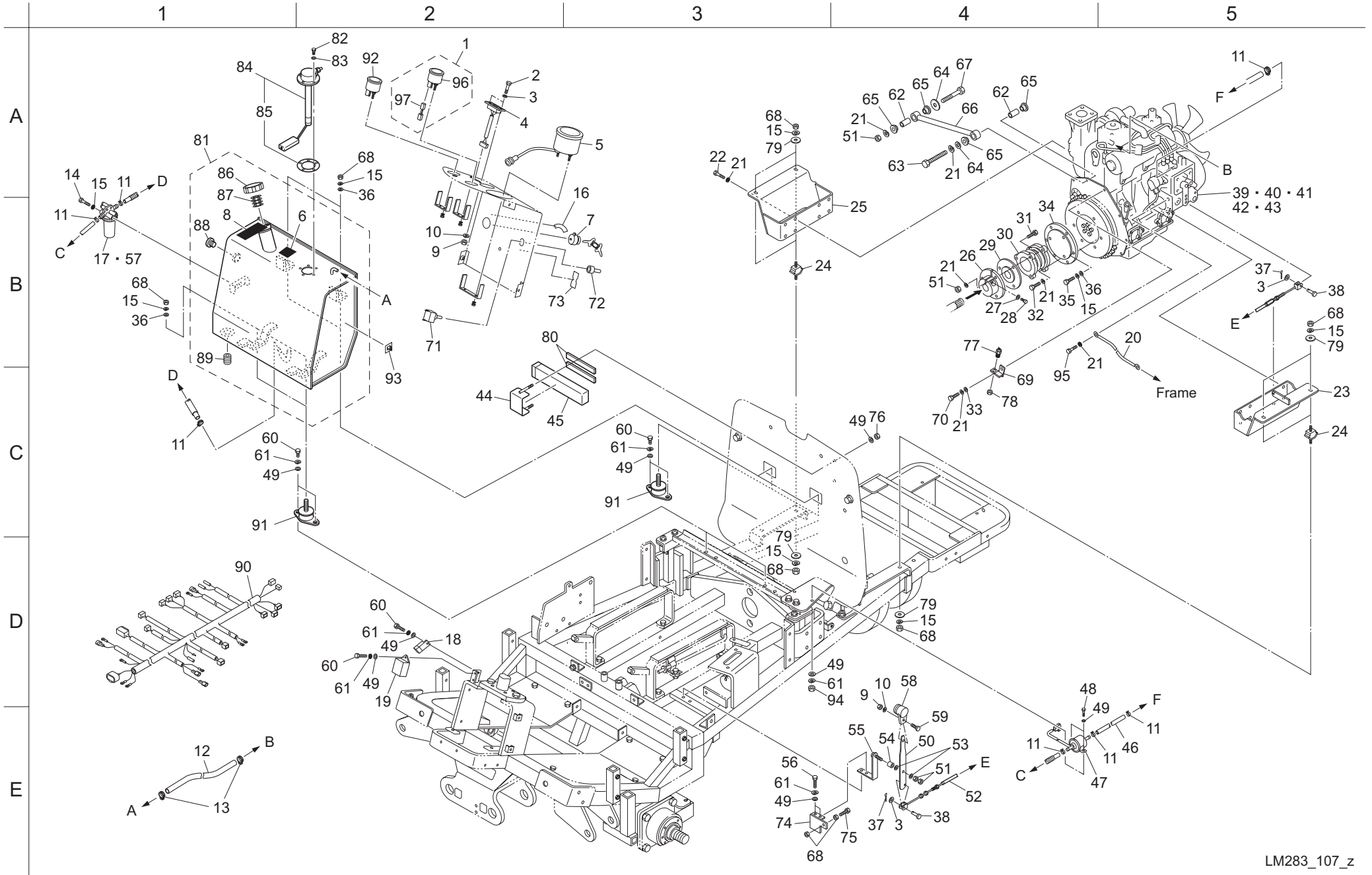


106. Pedal parts





107. Engine parts

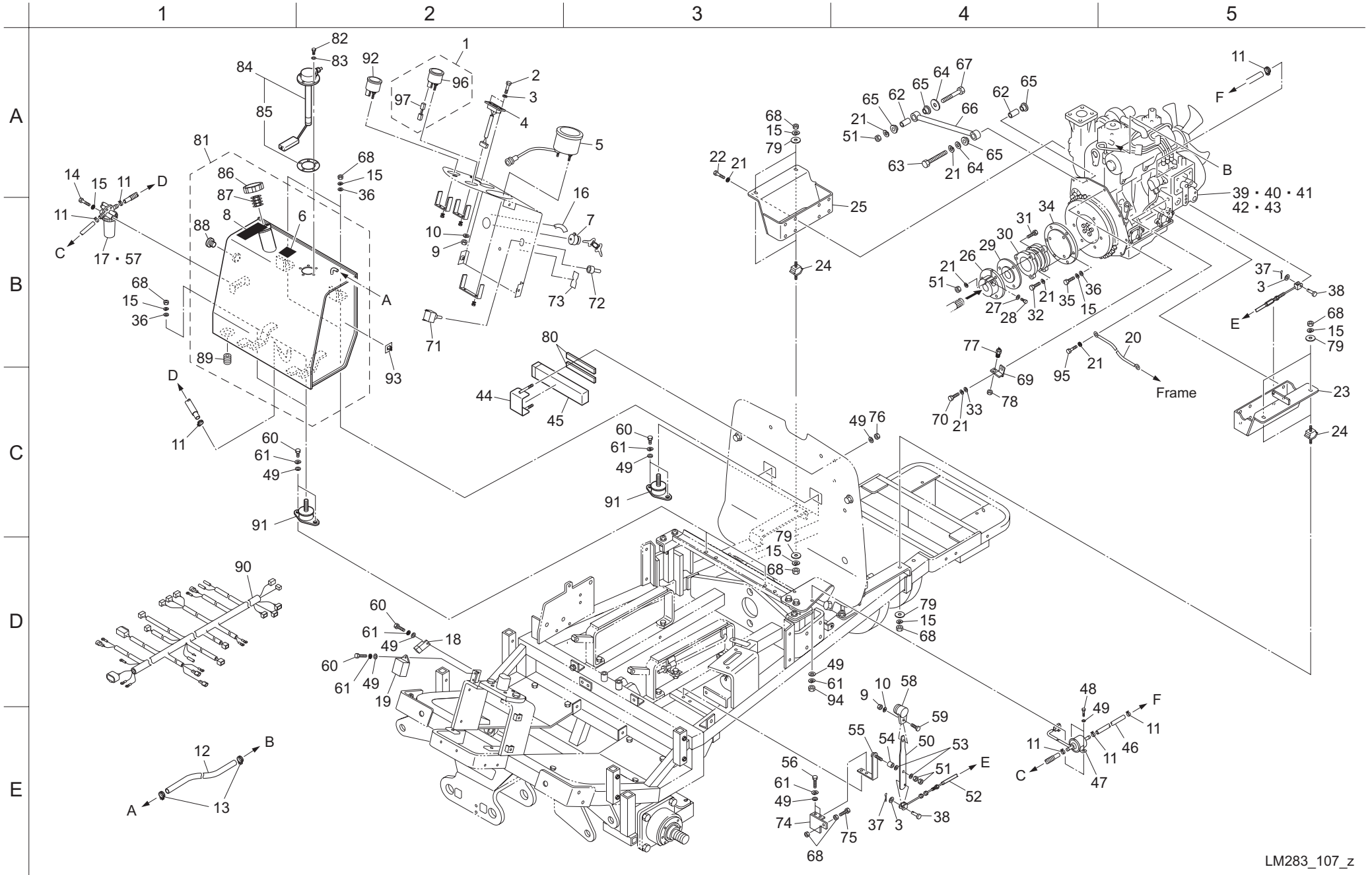




Cat No.	Code No.	Part name	Qty	Remark	SN of application
107-1	K9400000050	GAUGE ASSY, WATER TEMPERATURE	1		#10001~
107-2	K0042050122	SCREW, ROUND HEAD WITH + M5-12	2		
107-3	K5000050002	WASHER, M5	4		
107-4	K3641000040	LAMP, PILOT	1		
107-5	PF15886-8301-1	HOUR METER ASSY	1		
107-6	K4209001330	DECAL, DIESEL FUEL INDICATION	1		
107-7	PF15248-6359-0	SWITCH, STARTER	1		
107-8	K4209001000	DECAL, DIESEL FUEL REFUELING HOLE	1		
107-9	K0100050002	NUT, M5	3		
107-10	K0200050002	SPRING WASHER, M5	3		
107-11	PF14911-4275-1	CLIP, PIPE	6		
107-12	PF09661-4210-0	TUBE, FUEL	1		
107-13	PF14971-4275-1	CLIP, PIPE	2		
107-14	K0000080602	BOLT, M8-60	1		
107-15	K0200080002	SPRING WASHER, M8	13		
107-16	K4209001190	DECAL, KEY SWITCH	1		
107-17	PF1G313-4301-0	FILTER, FUEL ASSY	1		
107-18	PF1K574-6022-0	RELAY COMP	1		
107-19	PF15694-6599-0	TIMER, GLOW LAMP	1		
107-20	K3611000430	WIRE, TO EARTH 500	1		
107-21	K0200100002	SPRING WASHER, M10	23		
107-22	K0017100252	BOLT, HEAT-TREATED SMALL M10-25 PITCH 1.25	16		
107-23	LM285--0516AD	BASE, FOR ENGINE (LEFT)	1		
107-24	K4040000150	RUBBER, VIBRATION PROOF EC4001	4		
107-25	LM285--0517AD	BASE, FOR ENGINE (RIGHT)	1		
107-26	LM282--0541Z2	DISK, DRIVING PUMP SIDE	1		
107-27	K0215100002	WASHER, DISK SPRING TYPE 2 HEAVY LOAD M10	1		
107-28	K0024100351	BOLT, WITH HEX. HOLE M10-35	1		
107-29	K6204000562	SPACER, 118	1		
107-30	K1620000120	JOINT, BC75ACP201	1		
107-31	K0010100352	BOLT, HEAT-TREATED M10-35	3		
107-32	K0010100202	BOLT, HEAT-TREATED M10-20	3		
107-33	K5000100002	WASHER, M10	1		
107-34	LM282--0542Z2	FITTING, MOUNTING JOINT	1		
107-35	K0010080202	BOLT, HEAT-TREATED M8-20	6		

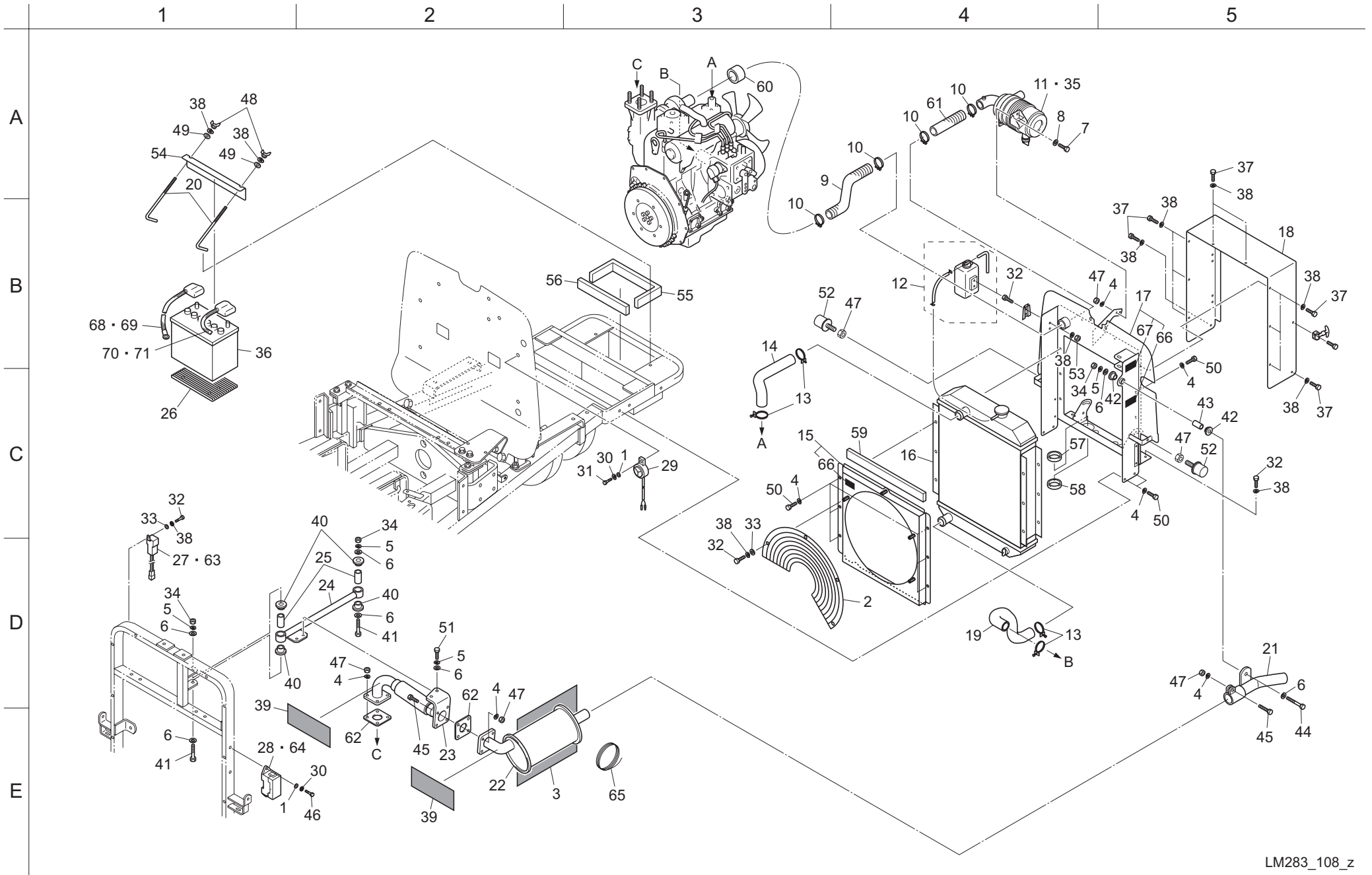
Cat No.	Code No.	Part name	Qty	Remark	SN of application
107-36	K5000080002	WASHER, M8	10		
107-37	K0300016122	COTTER PIN, 1.6-12	2		
107-38	K6030050122	PIN, FLAT HEAD M5-12	2		
107-39	K2691000100	ENGINE, KUBOTA D1105-T-E3B	1		
107-40	PF15241-3209-4	OIL ELEMENT	1		
107-41	PF16241-9701-0	BELT, FAN	1		
107-42	PF13901-3375-0	PLUG (DRAIN BOLT)	1		
107-43	PF6C090-5896-0	GASKET (DRAIN OIL PAN)	1		
107-44	LM285--1002ZD	BRACKET	1		
107-45	LM285--1001Z0	CASE, FOR MANUAL	1		
107-46	PF09661-8250-0	TUBE, FUEL	1		
107-47	PFR1401-5135-1	PUMP, SUPPLYING FUEL	1		
107-48	K0000060152	BOLT, M6-15	2		
107-49	K5000060002	WASHER, M6	18		
107-50	LM318--0510Z2	SHANK, THROTTLE LEVER	1		
107-51	K0100100002	NUT, M10	6		
107-52	K1110101000	WIRE, THROTTLE 1010	1		
107-53	K0210100002	DISC SPRING, LIGHT LOADING M8	2		
107-54	K6212000092	COLLAR, STKM M10-16-10	1		
107-55	LM318--0511Z2	BRACKET, THROTTLE LEVER	1		
107-56	K0000060202	BOLT, M6-20	2		
107-57	PF1G313-4356-0	FUEL ELEMENT	1		
107-58	K1301000150	GRIP, THROTTLE LEVER	1		
107-59	K0042050082	SCREW, ROUND HEAD WITH + M5-8	1		
107-60	K0000060102	BOLT, M6-10	10		
107-61	K0200060002	SPRING WASHER, M6	14		
107-62	K6211000062	COLLAR, SGP M12.7-17.3-31	2		
107-63	K0014100602	BOLT, HEAT-TREATED M10-60 PITCH 1.25	1		
107-64	K5073210352	WASHER, SPHC 3.2-10-35	2		
107-65	K4031000310	RUBBER, PLATE 32	4		
107-66	LM285--0551ZD	ROD, TORQUE	1		
107-67	K0010100602	BOLT, HEAT-TREATED M10-60	1		
107-68	K0100080002	NUT, M8	14		
107-69	LM285--0550ZD	FITTING, MOUNTING ELECTROMAGNETIC PICK UP	1		
107-70	K0011100302	BOLT, HEAT-TREATED M10-30 PITCH 1.25	1		

107. Engine parts





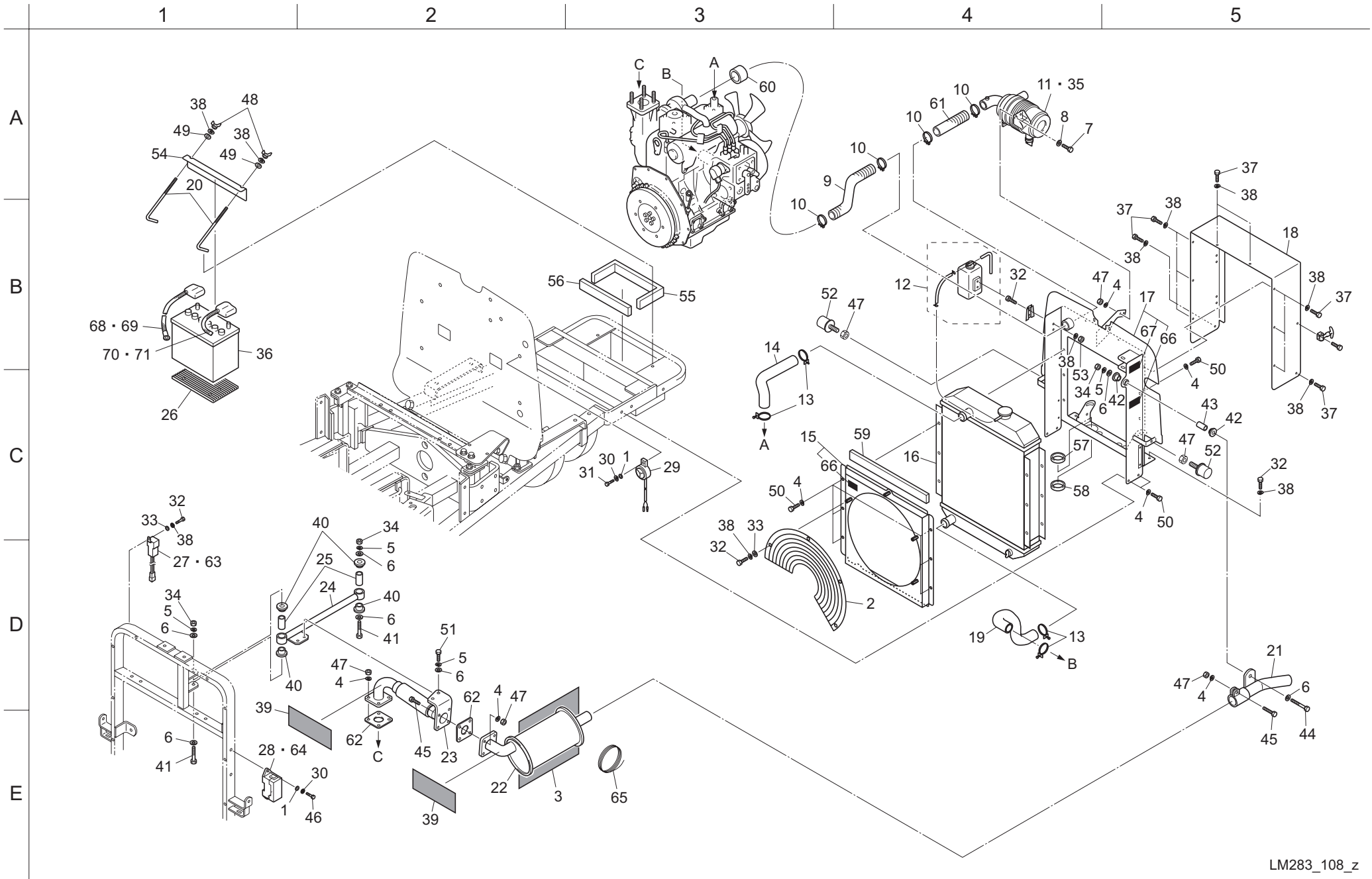
108. Radiator parts



Cat No.	Code No.	Part name	Qty	Remark	SN of application
108-1	K5000050002	WASHER, M5	3		
108-2	PF1G690-7412-0	COVER, FAN	1		
108-3	K4230000140	PLATE, HEAT INSULATING 1.6-285420	1		
108-4	K0200080002	SPRING WASHER, M8	27		
108-5	K0200100002	SPRING WASHER, M10	5		
108-6	K5000100002	WASHER, M10	8		
108-7	K0000080202	BOLT, M8-20	2		
108-8	K5000080002	WASHER, M8	2		
108-9	K3170004000	HOSE, 50 BANNER A TYPE 400	1		
108-10	K4262057000	CLAMP, LS BAND 57	4		
108-11	PF17407-1101-0	AIR CLEANER	1		
108-12	PFRC411-4268-1	RESERVE TANK ASSY	1		
108-13	PF09318-8903-9	CLAMP, FOR HOSE	4		
108-14	PF16292-7294-1	PIPE, WATER 4	1		
108-15	LM285-0560Z0	SHROUD, WITH MARK	1		
108-16	K2730000040	RADIATOR	1		
108-17	LM285-0561Z0	FITTING, MOUNTING RADIATOR WITH MARK	1		
108-18	LM285-0941ZD	BOX	1		
108-19	PF1G345-7285-0	HOSE, (1, WATER)	1		
108-20	LM285-0913A2	ROD, WITH M6	2		
108-21	LM285-0553ZU	PIPE, TAIL	1		
108-22	K2693000030	MUFFLER	1		
108-23	LM285-0552ZU	PIPE, FLEXIBLE EXHAUST	1		
108-24	LM285-0554ZD	BAR, SUPPORTING	1		
108-25	K6211000022	COLLAR, M12-17.3-40	2		
108-26	K4035000020	RUBBER, VIBRATION PROOF 256	1		
108-27	K3630000130	FUSIBLE LINK, 50A	1		
108-28	K3630000110	FUSE BLOCK, MINI 10P-B	1		
108-29	K3700000010	BUZZER, EBM-12 TYPE	1		
108-30	K0200050002	SPRING WASHER, M5	3		
108-31	K0000050252	BOLT, M5-25	1		
108-32	K0000060152	BOLT, M6-15	9		
108-33	K5000060002	WASHER, M6	5		
108-34	K0100100002	NUT, M10	3		
108-35	PFT0270-1632-0	ELEMENT, AIR CLEANER	1		

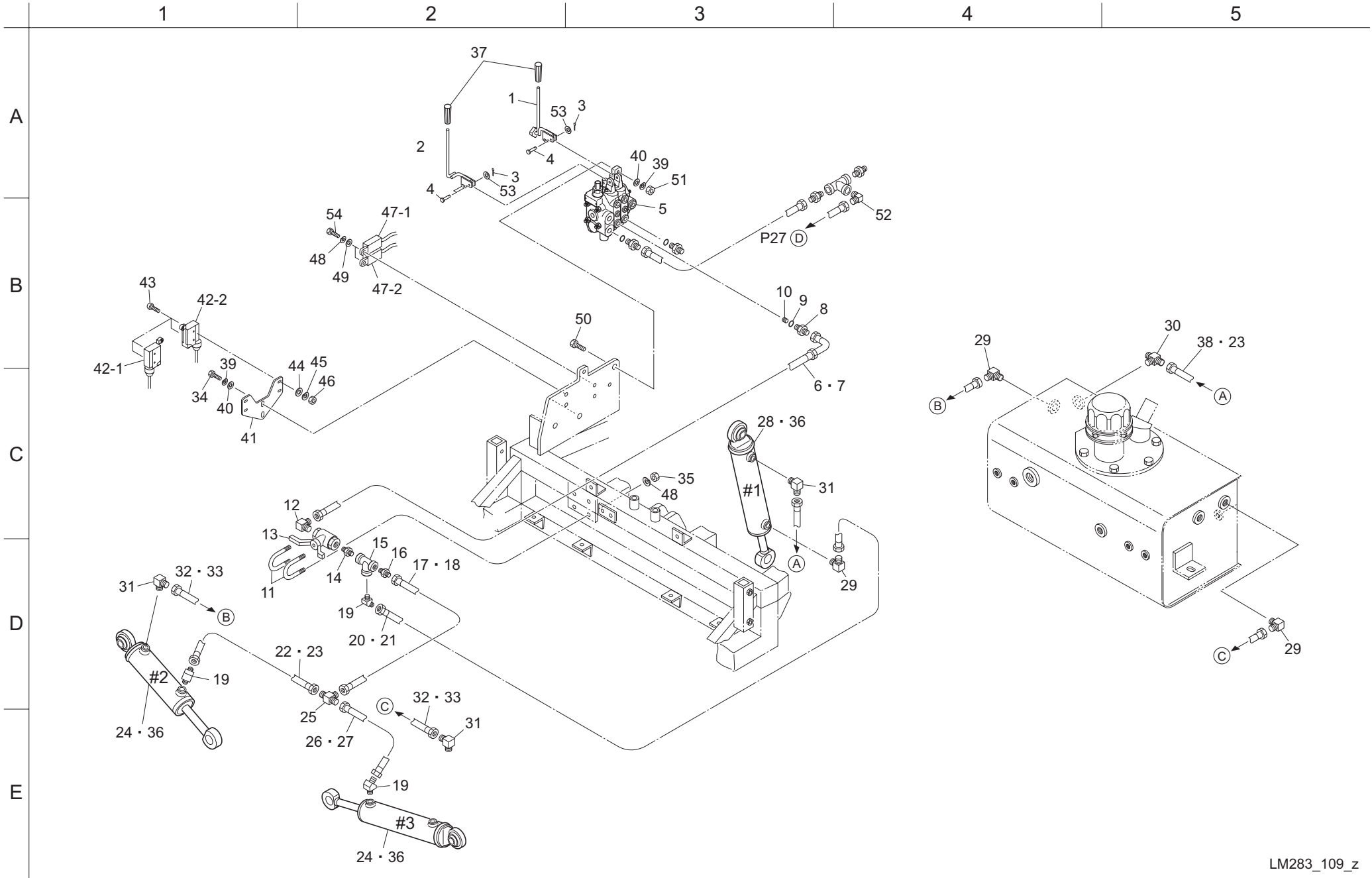
Cat No.	Code No.	Part name	Qty	Remark	SN of application
108-36	K3600000160	BATTERY, FX75D23L	1		
108-37	K0000060102	BOLT, M6-10	10		
108-38	K0200060002	SPRING WASHER, M6	21		
108-39	K4230000040	PLATE, HEAT INSULATING 1.6-301000	2		
108-40	K4031000050	RUBBER, ROUND FOR HANDLE 35	4		
108-41	K0010100702	BOLT, HEAT-TREATED M10-70	2		
108-42	K4031000020	RUBBER, ROUND FOR HANDLE 32	2		
108-43	K6211000062	COLLAR, SGP M12.7-17.3-31	1		
108-44	K0003100502	BOLT, M10-50	1		
108-45	K0000080302	BOLT, M8-30	5		
108-46	K0000050152	BOLT, M5-15	2		
108-47	K0100080002	NUT, M8	13		
108-48	K0141060002	FLY NUT, TYPE 3 M6	2		
108-49	K5012306162	WASHER, SPCC 2.3-6-16	2		
108-50	K0000080152	BOLT, M8-15	16		
108-51	K0000100252	BOLT, M10-25	2		
108-52	K4049030000	RUBBER, STOPPER KI-30	2		
108-53	K0100060002	NUT, M6	2		
108-54	LM285-0911Z2	HOLDER, BATTERY	1		
108-55	GM1600-0519Z0	SPONGE, RUBBER 8-610	1		
108-56	GM1600-0520Z0	SPONGE, RUBBER 8-250	1		
108-57	K0900300660	GROMMET, WITH THIN FILM C30SG66A	2		
108-58	K0900300300	GROMMET, WITH THIN FILM C30SG30A	2		
108-59	LM282-0522Z0	SPONGE, URETHANE	2		
108-60	LM285-0555Z0	COLLAR, FOR TURBINE	1		
108-61	K3170001500	HOSE, 50 BANNER A TYPE 150	1		
108-62	PF15263-1237-0	PACKING, MUFFLER NA	2		
108-63	K3631000170	FUSE, PLUG IN TYPE 50A	1		
108-64	K3631000070	FUSE, MINI BLADE TYPE 5A	1		
108-65	K4980015000	WIRE STAINLESS 1.2-1500	1		
108-66	K4205001530	DECAL, CAUTION TO ROTATING OBJECT	2		
108-67	K4205001540	DECAL, CAUTION TO HOT PARTS	1		
108-68	K3610000230	WIRE, BATTERY (+) 1250	1		
108-69	K3196012000	CORRUGATE TUBE, 13-1200	1		
108-70	K3611000420	WIRE, TO EARTH BATTERY 1000	1		

108. Radiator parts





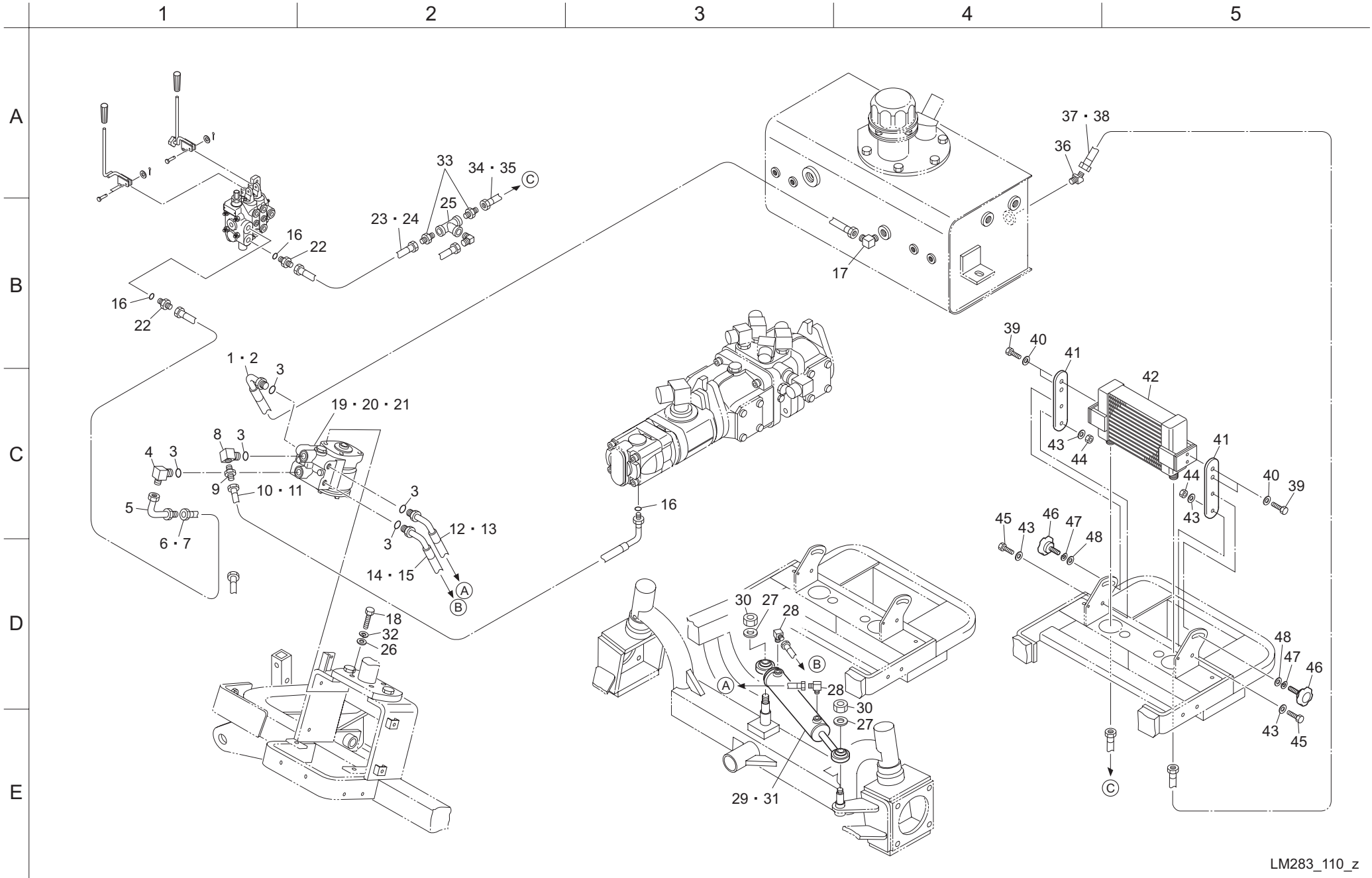
109. Hydraulic parts A(Cylinder system)





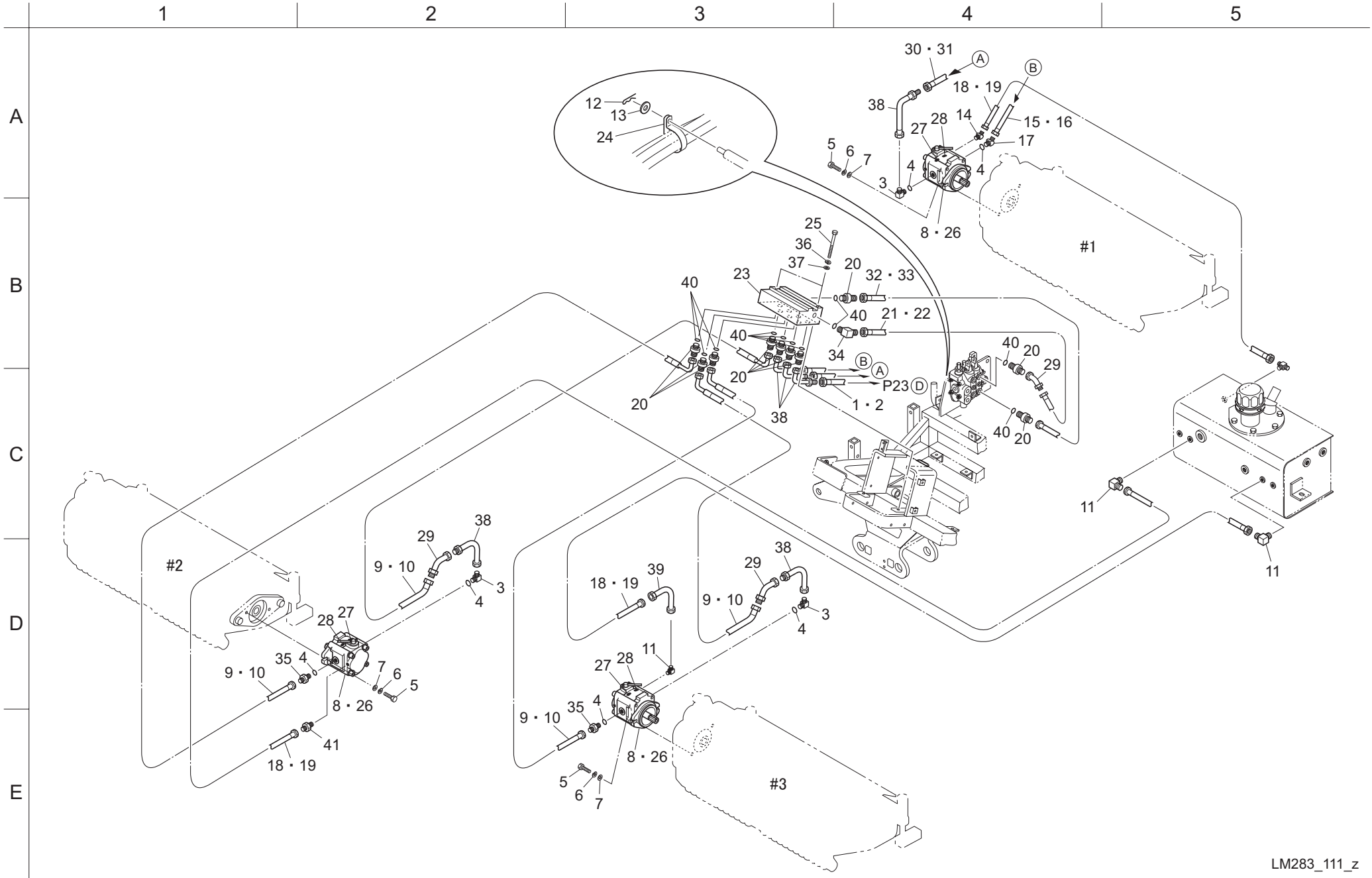


110. Hydraulic parts A(Power steering system)



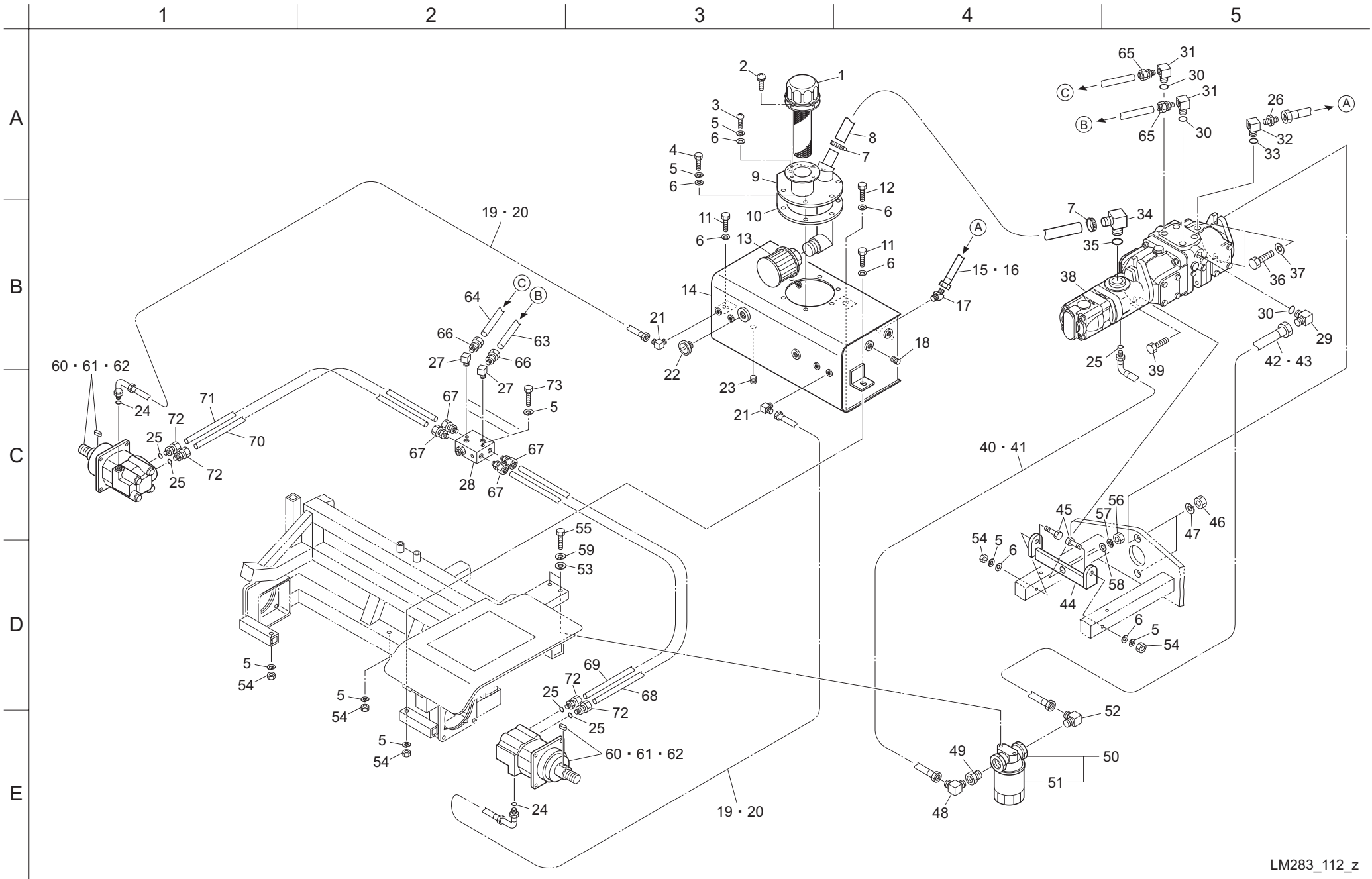


111. Hydraulic parts B (Reel motor system)





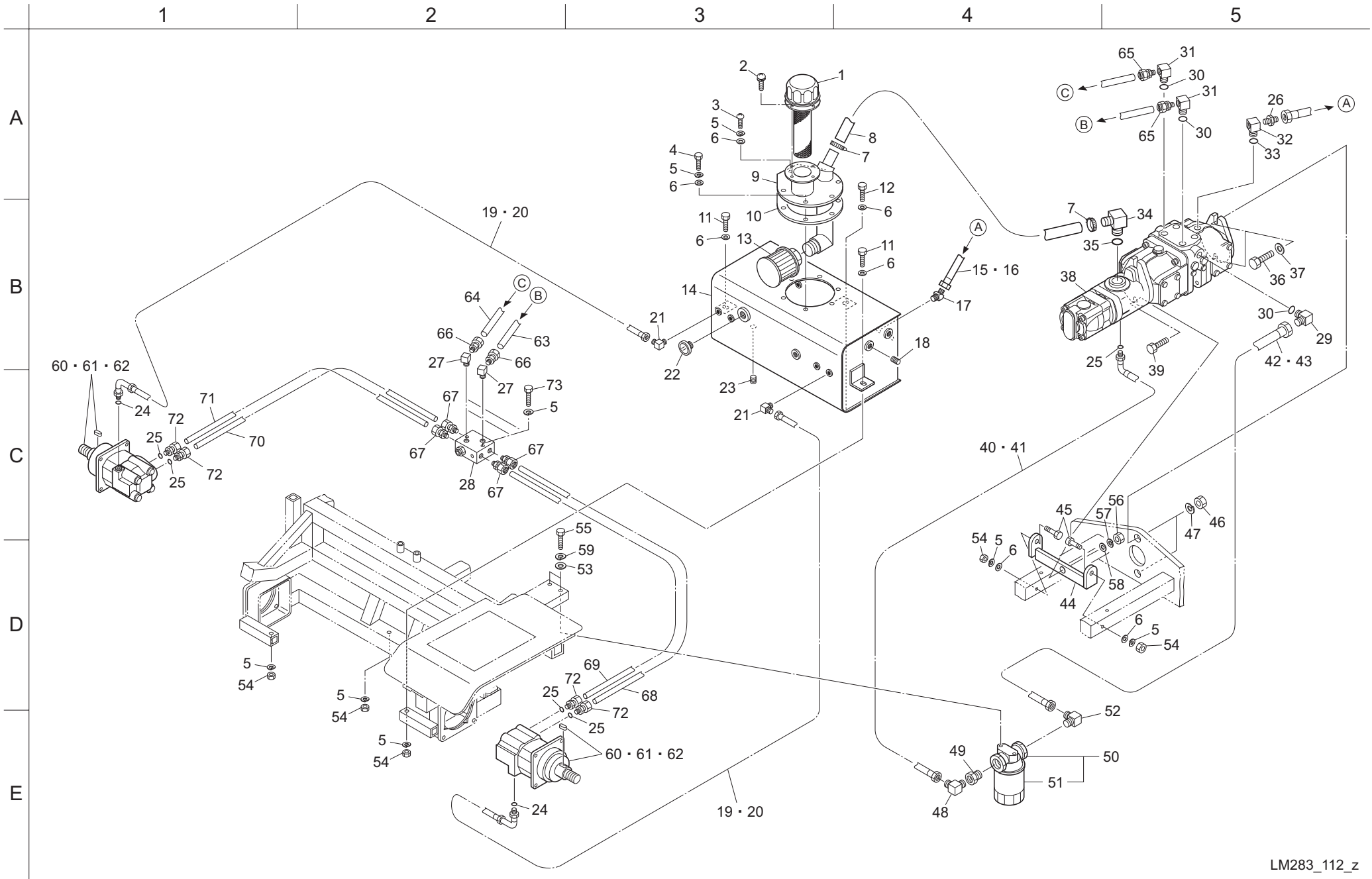
### 112. Hydraulic parts C (Front wheel motor system)



Cat No.	Code No.	Part name	Qty	Remark	SN of application
112-1	K3400000030	BREATHER, REFUELING HOLE FAB-50	1		
112-2	K0044050102	SCREW, ROUND HEAD WITH + M5-10SW	4		
112-3	K0056080200	SCREW, TRUSS STAINLESS WITH + M8-20	1		
112-4	K0000080202	BOLT, M8-20	5		
112-5	K0200080002	SPRING WASHER, M8	13		
112-6	K5000080002	WASHER, M8	11		
112-7	K4260000200	CLAMP, JUBILEE BAND 2A	2		
112-8	LM318--0730Z0	HOSE, WP35-32 X 500	1		
112-9	LM318--0705Z2-Y	PORT, SUCTION HYDRAULIC TANK	1		
112-10	LM318--0711Z0	PACKING	1		
112-11	K0003080502	BOLT, M8-50	2		
112-12	K0003080702	BOLT, M8-70	1		
112-13	K3413000020	FILTER, SUCTION SFT-08-150W	1		
112-14	LM318--0701CD-Y	TANK, HYDRAULIC	1		
112-15	K3145000340	HOSE, SSC35-1000	1		
112-16	K3192008500	COIL TUBE, SP-20 TYPE 850	1		
112-17	K3003190002-Y	ELBOW, 45 DEG. 1035-19	1		
112-18	K1422108001-Y	TAPER PLUG, WITH HEX. HOLE TYPE1, 1/2	1		
112-19	K3145000270	HOSE, SSC35-250	2		
112-20	K3190001550	COIL TUBE, SP-12 TYPE 155	2		
112-21	K3001060002-Y	ELBOW, 90 DEG. 1033-6	2		
112-22	K1400000044-Y	OIL PLUG, M TYPEPF3/4	1		
112-23	K1422106001-Y	TAPER PLUG, WITH HEX. HOLE TYPE1, 3/8	1		
112-24	K0881011000	O-RING, P11B	2		
112-25	K0881018000	O-RING, P18B	5		
112-26	K3007000012-Y	ADAPTOR, ODD SIZED PT1/2 X PF3/4	1		
112-27	K3022080002-Y	ELBOW, FEMALE-MALE STEPT1/2	2		
112-28	K3321000020	MANIFOLD, WITH RELIEF VALVE	1		
112-29	K3008000162-Y	ELBOW, 90 DEG. ADJUSTABLE UNF	1		
112-30	K0887009100	O-RING, AS568-910	3		
112-31	K3008000142-Y	ELBOW, 90 DEG. ADJUSTABLE	2		
112-32	K3008000172-Y	ELBOW, 90 DEG. ADJUSTABLE UNF	1		
112-33	K0887009080	O-RING, AS568-908	1		
112-34	K3008000152-Y	NIPPLE, FOR 90DEG. ELBOW	1		
112-35	K0881029000	O-RING, P29B	1		

Cat No.	Code No.	Part name	Qty	Remark	SN of application
112-36	K0013140502	BOLT, HEAT-TREATED M14-50	2		
112-37	K5000140002	WASHER, M14	2		
112-38	K3240000020	PISTON PUMP, PV1616AR	1		
112-39	K0000120452	BOLT, M12-45	1		
112-40	K3145000610	HOSE, SSC35-710	1		
112-41	K3191006100	COIL TUBE, SP-15 TYPE 610	1		
112-42	K3145000600	HOSE, SSC35-660	1		
112-43	K3192005600	COIL TUBE, SP-20 TYPE 560	1		
112-44	LM318--0708ZD	MOUNT, PUMP	1		
112-45	K0000080602	BOLT, M8-60	2		
112-46	K0100140002	NUT, M14	2		
112-47	K0200140002	SPRING WASHER, M14	2		
112-48	K3006000102-Y	ELBOW, ODD SIZED PT3/4 X PF1/2	1		
112-49	K3024000012-Y	BUSH, CAST IRON 1 X 3/4	1		
112-50	K3412000030	FILTER, SP08-10-03	1		
112-51	K3412000060	FILTER, FOR THE SUBSTITUTE C-SP08H-10	1		
112-52	K3006000112-Y	ELBOW, ODD SIZED PT1 X PF3/4	1		
112-53	K5000100002	WASHER, M10	2		
112-54	K0100080002	NUT, M8	5		
112-55	K0000100202	BOLT, M10-20	2		
112-56	K0100120002	NUT, M12	1		
112-57	K0200120002	SPRING WASHER, M12	1		
112-58	K5000120002	WASHER, M12	1		
112-59	K0200100002	SPRING WASHER, M10	2		
112-60	K3291000190	WHEEL MOTOR, 2-200BS4S	2		
112-61	Y61090S	SEAL KIT, 2000 ORBIT MOTOR (FOR REAR)	2		
112-62	Y61091S	SEAL KIT, 2000 ORBIT MOTOR (FOR SHAFT)	2		
112-63	LM285--0785Z2-Y	PIPE, FOR PUMP A2	1		
112-64	LM285--0786Z2-Y	PIPE, FOR PUMP 132	1		
112-65	K3026622121-Y	CONNECTOR, KCT22-060E	2		
112-66	K3026622081-Y	CONNECTOR, KCT22-040E	2		
112-67	K3026615081-Y	CONNECTOR KCT15-040E	4		
112-68	LM285--0781Z2-Y	PIPE, FOR MOTOR B (LEFT)	1		
112-69	LM285--0782Z2-Y	PIPE, FOR MOTOR A (LEFT)	1		
112-70	LM285--0784Z2-Y	PIPE, FOR MOTOR A (RIGHT)	1		

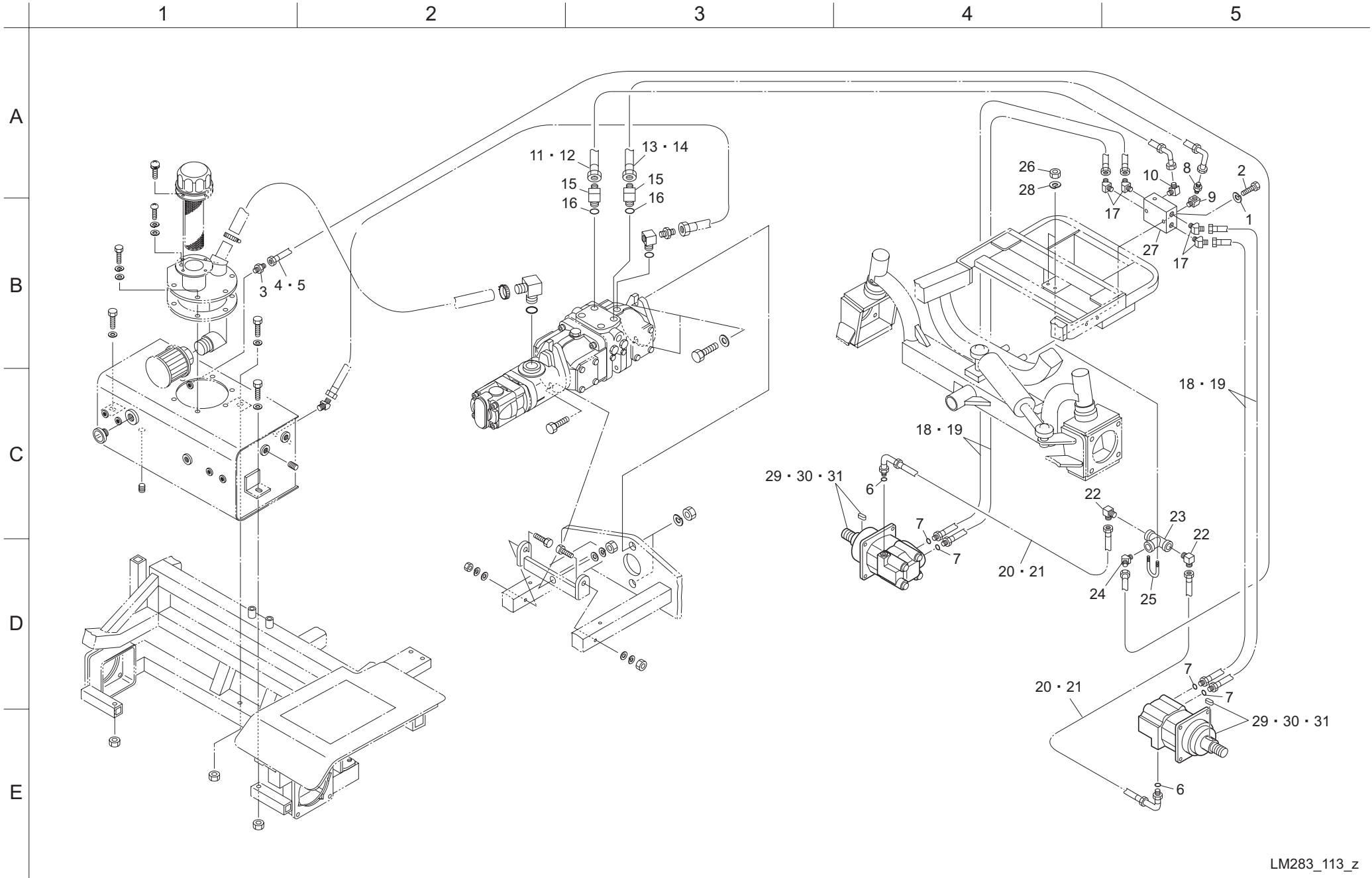
112. Hydraulic parts C (Front wheel motor system)





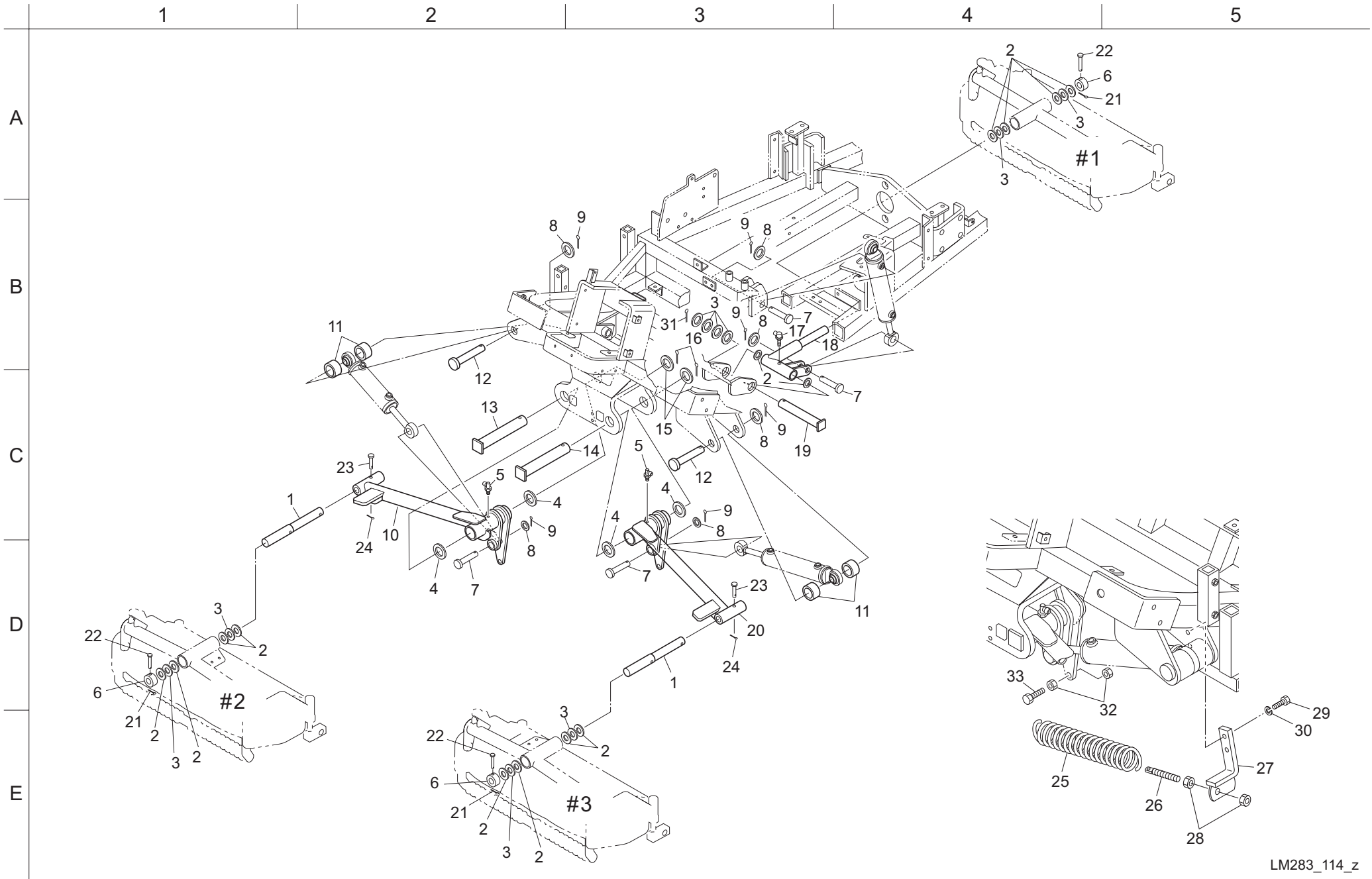


113. Hydraulic parts C (Rear wheel motor system)



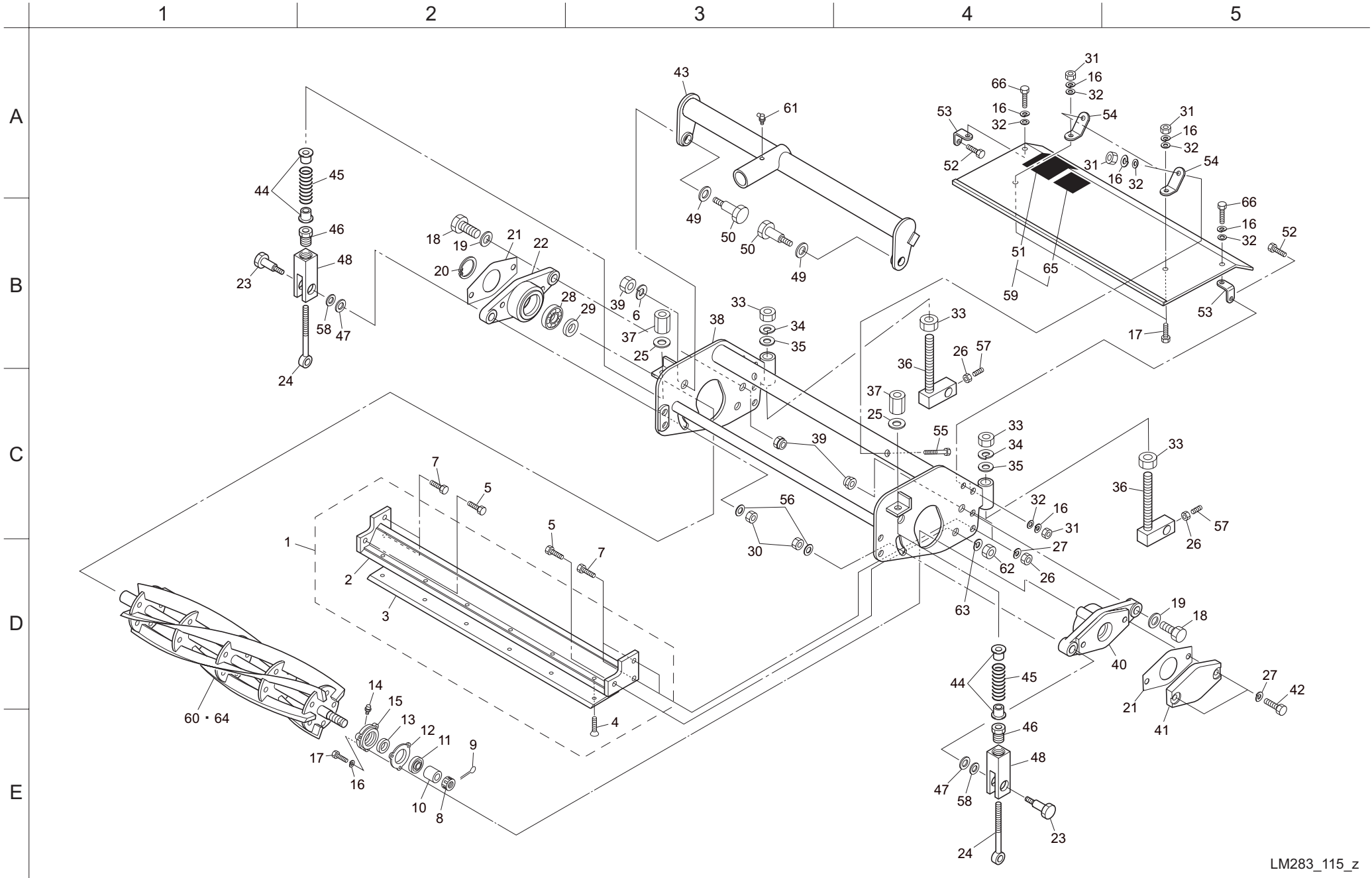


114. Mower lift arm parts



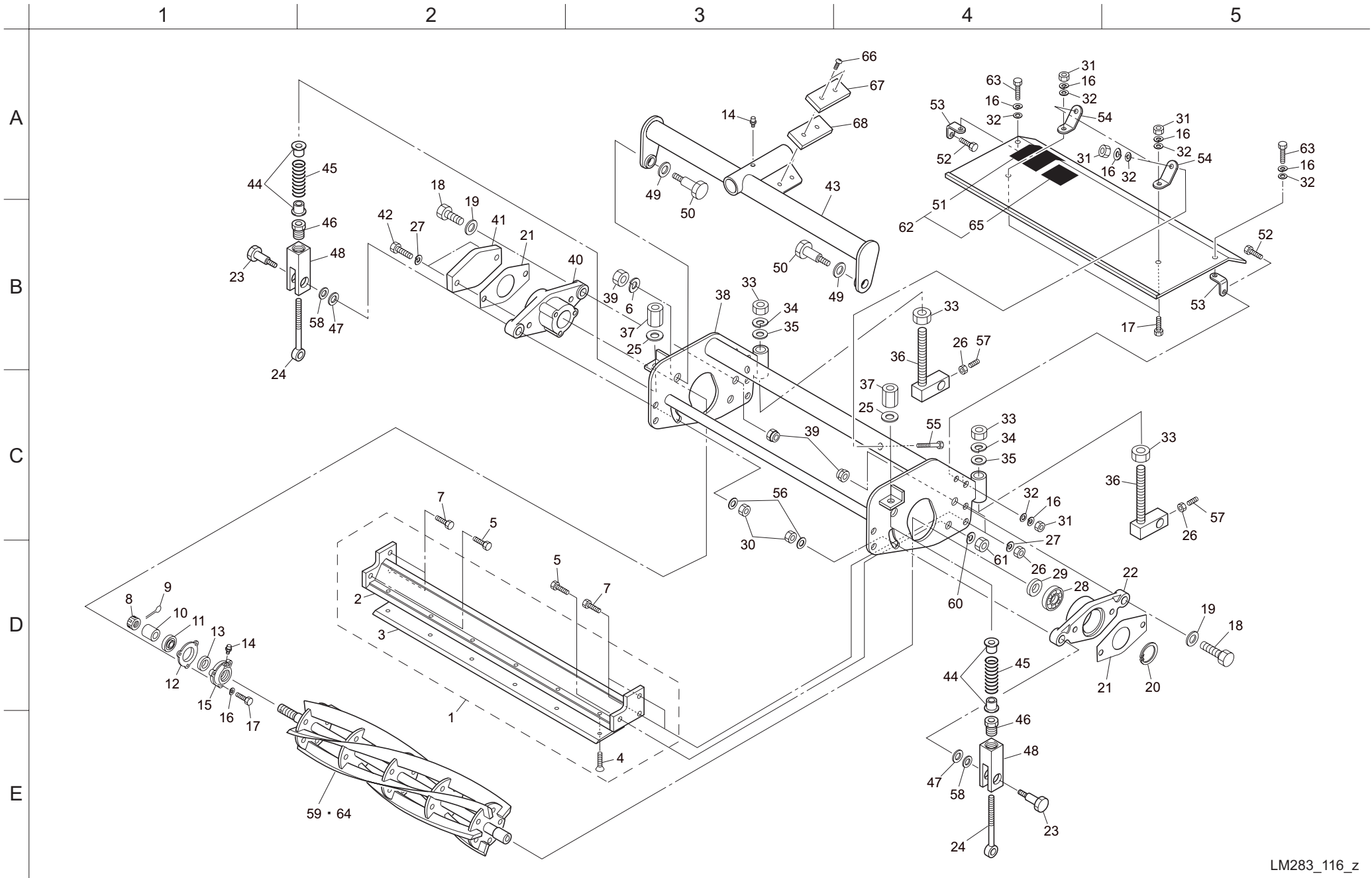


115. Mower parts (#1)





116. Mower parts (#2)

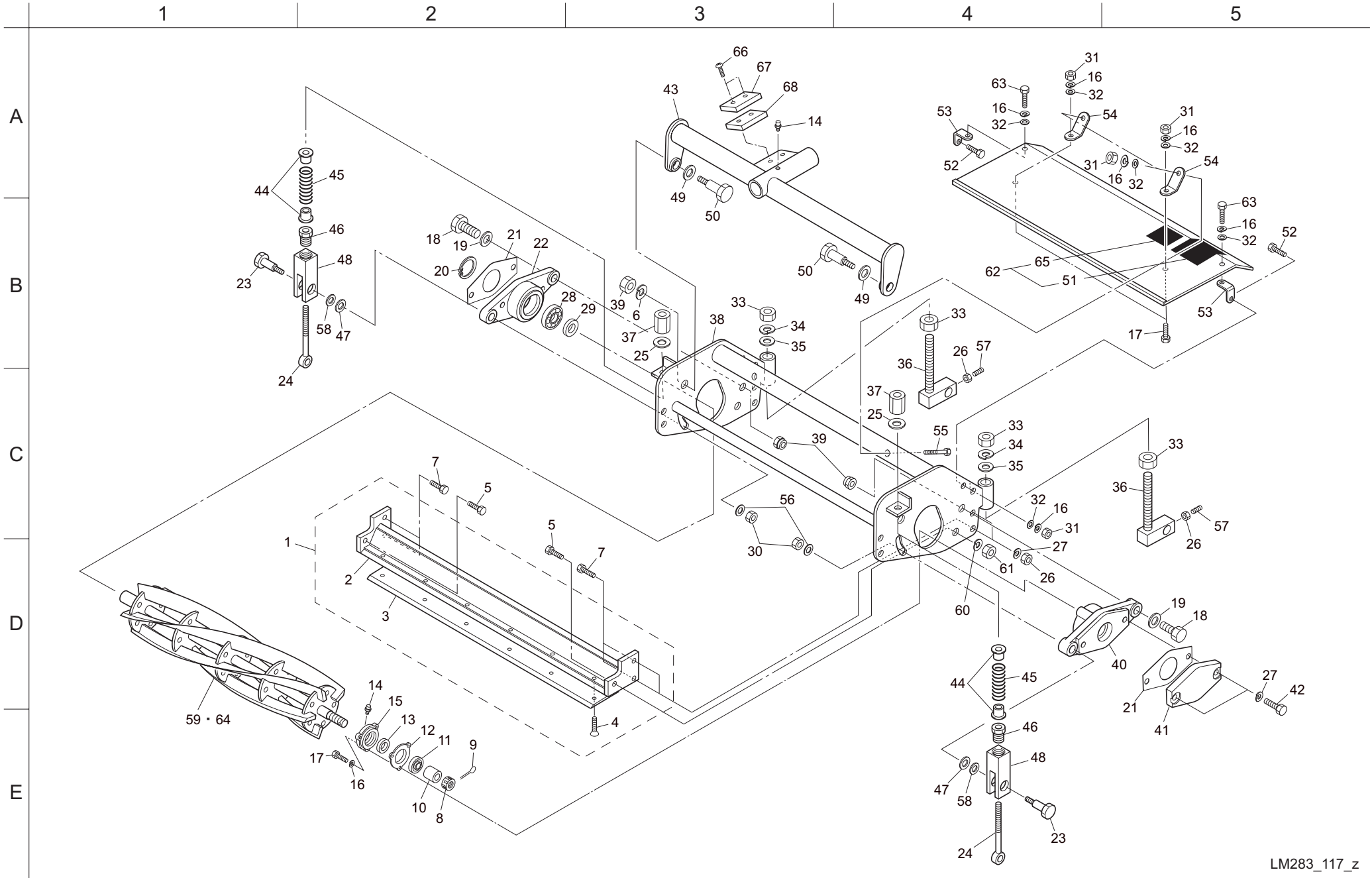




Cat No.	Code No.	Part name	Qty	Remark	SN of application
116-1	K8022000020	KNIFE ASSY 180-RIGHT & LEFT MOWER	1		
116-2	K744200006R	MOUNT, FOR BED KNIFE(BOTTOM BLADE) 732	1		
116-3	K2510000030	BED-KNIFE (BOTTOM BLADE), 85-662	1		
116-4	K0071000092	SCREW, HEAT-TREATED FLATHEAD M10-20	6		
116-5	K0000120302	BOLT, M12-30	2		
116-6	K0200140002	SPRING WASHER, M14	2		
116-7	K0000100252	BOLT, M10-25	4		
116-8	K0170000012	SLOTTED NUT, SPECIAL TYPE M20	1		
116-9	K0300032252	COTTER PIN, 3.2-25	1		
116-10	K6212001742	COLLAR, STKM M20.2-28-18	1		
116-11	K0602063040	BEARING, 6304Z	1		
116-12	K4011000150	PACKING, OIL-SHEET	1		
116-13	K0822542080	OIL SEAL, MHSA25428	1		
116-14	K1440000010	GREASE NIPPLE, A TYPE	2		
116-15	K6903000042	CAP, HOUSING	1		
116-16	K0200060002	SPRING WASHER, M6	11		
116-17	K0000060152	BOLT, M6-15	5		
116-18	K0071001132	BOLT, SUPPORT SHAFT	2		
116-19	K5012314252	WASHER, SPCC 2.3-14-25	2		
116-20	K0402072001	RETAINING RING, R72	1		
116-21	K4011000290	PACKING, OIL-SHEET	2		
116-22	K6903000192	HOUSING, HYDRAULIC MOTOR A	1		
116-23	K6082000122	BOLT, STEPPED HEXAGON HEADED	2		
116-24	K7303000182	BOLT, ADJUSTING CUTTER	2		
116-25	K5051010160	WASHER, C5191P 1-10-16	2		
116-26	K0100100002	NUT, M10	6		
116-27	K0200100002	SPRING WASHER, M10	6		
116-28	K0602062070	BEARING, 6207Z	1		
116-29	K0823560120	OIL SEAL, MHSA356012	1		
116-30	K0145100002	NUT, WITH FRICTION RING, M10 PITCH 1.25	2		
116-31	K0100060002	NUT, M6	6		
116-32	K5000060002	WASHER, M6	8		
116-33	K0108180002	NUT, M18-3 PITCH 1.5	4		
116-34	K0200180002	SPRING WASHER, M18	2		
116-35	K5012018282	WASHER, SPCC 2-18-28	2		

Cat No.	Code No.	Part name	Qty	Remark	SN of application
116-36	LM526A-0108Z2	SCREW, CUTTING HEIGHT ADJUSTING	2		
116-37	K0160000032	NUT, ADJUSTING BED-KNIFE M10 PITCH 1	2		
116-38	K705200006R	FRAME, MOWER	1		
116-39	K0105140002	NUT, M14-3 PITCH 1.5	4		
116-40	K6903000212	HOUSING, REEL	1		
116-41	K690300017D	COVER, REEL HOUSING	1		
116-42	K0000100452	BOLT, M10-45	2		
116-43	LM318--0168ZR	FRAME, MOWER (FRONT RIGHT)	1		
116-44	K6206000052	RECEIVER, FOR SPRING	4		
116-45	K1000000458	COMPRESSION SPRING, M5-25-60	2		
116-46	K6081000082	PIPE, WITH CUTTER ADJUSTING SCREW	2		
116-47	K5012310172	WASHER, SPCC 2.3-10-17	2		
116-48	K6090000552	BASE, ADJUSTING SCREW MOUNTING	2		
116-49	K5011020282	WASHER, SPCC 1-20-28	2		
116-50	K6082000132	BOLT, STEPPED HEXAGON HEADED	2		
116-51	K4205001600	DECAL, CAUTION TO MUTILATION	1		
116-52	K0000060202	BOLT, M6-20	2		
116-53	K5206000522	PLATE, FOR FIXING COVER	2		
116-54	K527600041R	PLATE, FOR FIXING COVER	2		
116-55	K0000060502	BOLT, M6-50	1		
116-56	K5073210242	WASHER, SPHC 3.2-10-24	2		
116-57	K0023100251	SETSCREW, M10-25	2		
116-58	K0214100002	WASHER, DISK SPRING TYPE 2 LIGHT LOAD M10	2		
116-59	K285260L70R	REEL CUTTER (CYLINDER), 660-7L	1	7 Blades	
116-60	K0200120002	SPRING WASHER, M12	2		
116-61	K0100120002	NUT, M12	2		
116-62	K9010000110	COVER, FOR REEL WITH MARK (LEFT)	1		
116-63	K0000060102	BOLT, M6-10	2		
116-64	K285260L50R	REEL CUTTER (CYLINDER), 660-5L	1	5 Blades	
116-65	K4205001650	DECAL, CAUTION TO FRYING OBJECT	1		
116-66	K0041060252	SCREW, COUNTERSUNK HEAD WITH + M6-25	2		
116-67	K4033000380	RUBBER, PLATE STOPPER	1		
116-68	LM283--0101ZR	PLATE, 4.5-40-63	1		

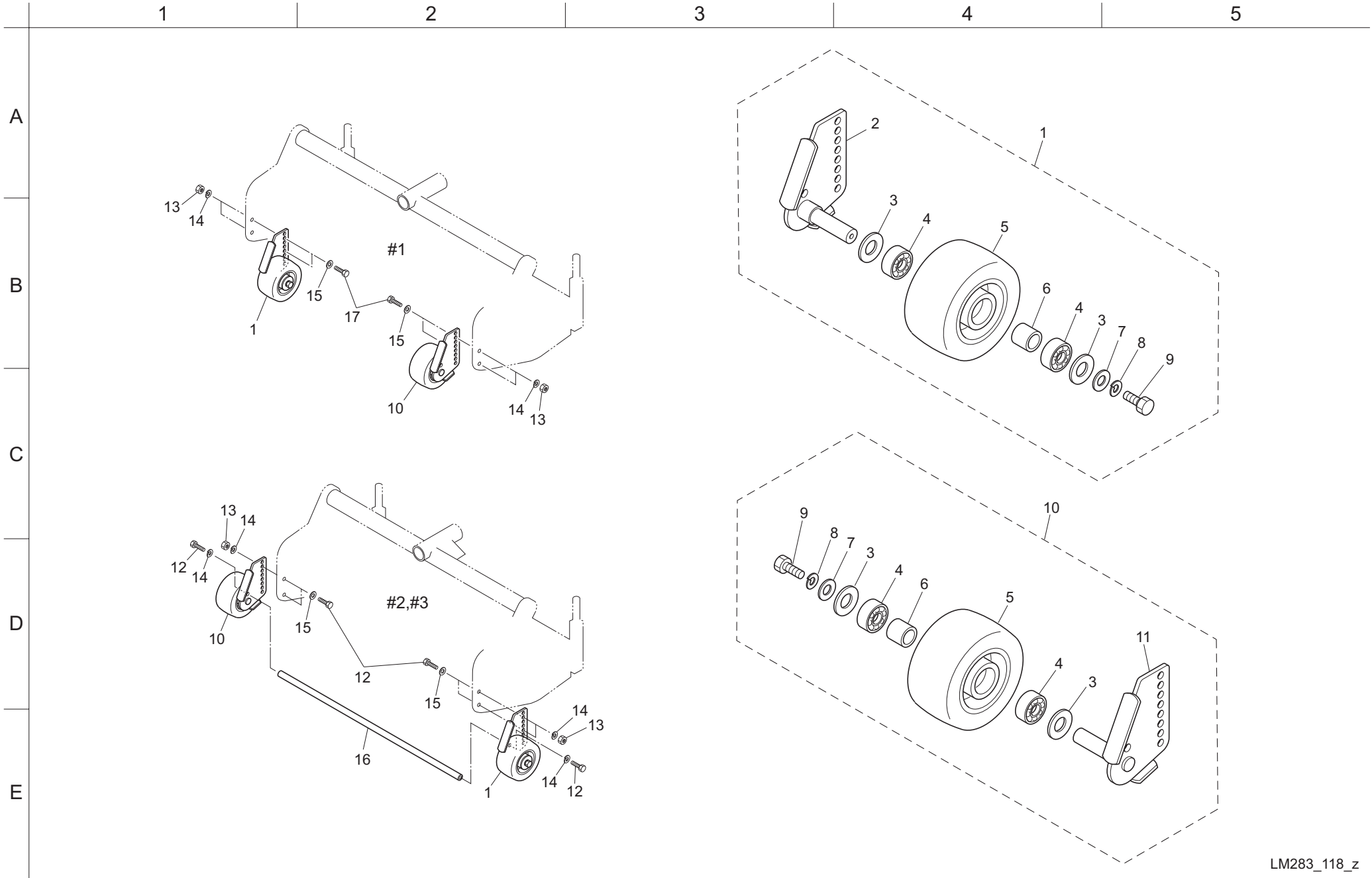
117. Mower parts (#3)



Cat No.	Code No.	Part name	Qty	Remark	SN of application
117-1	K8022000020	KNIFE ASSY 180-RIGHT & LEFT MOWER	1		
117-2	K744200006R	MOUNT, FOR BED KNIFE(BOTTOM BLADE) 732	1		
117-3	K2510000030	BED-KNIFE (BOTTOM BLADE), 85-662	1		
117-4	K0071000092	SCREW, HEAT-TREATED FLATHEAD M10-20	6		
117-5	K0000120302	BOLT, M12-30	2		
117-6	K0200140002	SPRING WASHER, M14	2		
117-7	K0000100252	BOLT, M10-25	4		
117-8	K0170000012	SLOTTED NUT, SPECIAL TYPE M20	1		
117-9	K0300032252	COTTER PIN, 3.2-25	1		
117-10	K6212001742	COLLAR, STKM M20.2-28-18	1		
117-11	K0602063040	BEARING, 6304Z	1		
117-12	K4011000150	PACKING, OIL-SHEET	1		
117-13	K0822542080	OIL SEAL, MHSA25428	1		
117-14	K1440000010	GREASE NIPPLE, A TYPE	2		
117-15	K6903000042	CAP, HOUSING	1		
117-16	K0200060002	SPRING WASHER, M6	11		
117-17	K0000060152	BOLT, M6-15	5		
117-18	K0071001132	BOLT, SUPPORT SHAFT	2		
117-19	K5012314252	WASHER, SPCC 2.3-14-25	2		
117-20	K0402072001	RETAINING RING, R72	1		
117-21	K4011000290	PACKING, OIL-SHEET	2		
117-22	K6903000202	HOUSING, HYDRAULIC MOTOR B	1		
117-23	K6082000122	BOLT, STEPPED HEXAGON HEADED	2		
117-24	K7303000182	BOLT, ADJUSTING CUTTER	2		
117-25	K5051010160	WASHER, C5191P 1-10-16	2		
117-26	K0100100002	NUT, M10	6		
117-27	K0200100002	SPRING WASHER, M10	6		
117-28	K0602062070	BEARING, 6207Z	1		
117-29	K0823560120	OIL SEAL, MHSA356012	1		
117-30	K0145100002	NUT, WITH FRICTION RING, M10 PITCH 1.25	2		
117-31	K0100060002	NUT, M6	6		
117-32	K5000060002	WASHER, M6	8		
117-33	K0108180002	NUT, M18-3 PITCH 1.5	4		
117-34	K0200180002	SPRING WASHER, M18	2		
117-35	K5012018282	WASHER, SPCC 2-18-28	2		

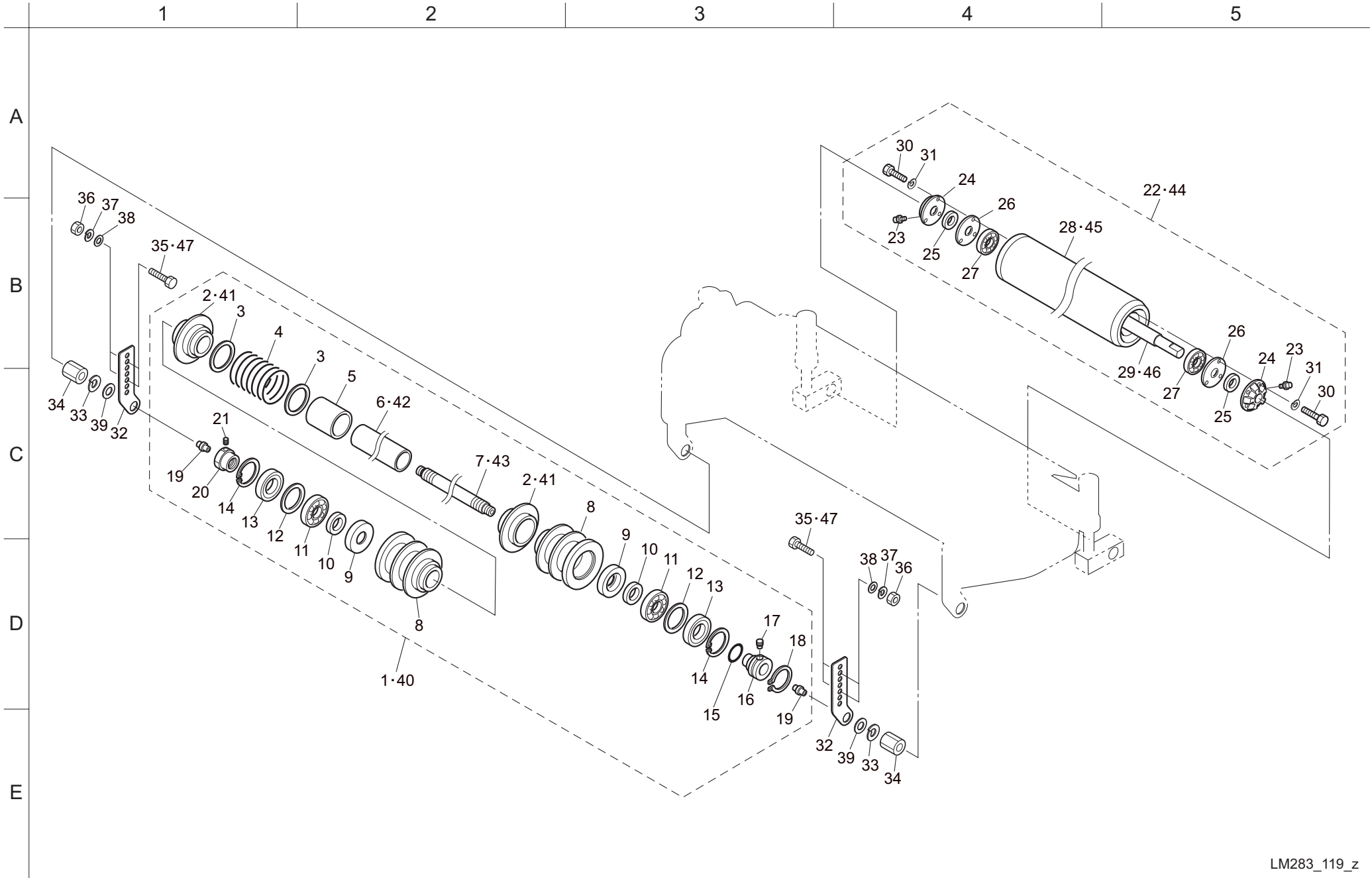
Cat No.	Code No.	Part name	Qty	Remark	SN of application
117-36	LM526A-0108Z2	SCREW, CUTTING HEIGHT ADJUSTING	2		
117-37	K0160000032	NUT, ADJUSTING BED-KNIFE M10 PITCH 1	2		
117-38	K705200006R	FRAME, MOWER	1		
117-39	K0105140002	NUT, M14-3 PITCH 1.5	4		
117-40	K6903000212	HOUSING, REEL	1		
117-41	K690300017D	COVER, REEL HOUSING	1		
117-42	K0000100452	BOLT, M10-45	2		
117-43	LM318-0169ZR	FRAME, MOWER (FRONT LEFT)	1		
117-44	K6206000052	RECEIVER, FOR SPRING	4		
117-45	K1000000458	COMPRESSION SPRING, M5-25-60	2		
117-46	K6081000082	PIPE, WITH CUTTER ADJUSTING SCREW	2		
117-47	K5012310172	WASHER, SPCC 2.3-10-17	2		
117-48	K6090000552	BASE, ADJUSTING SCREW MOUNTING	2		
117-49	K5011020282	WASHER, SPCC 1-20-28	2		
117-50	K6082000132	BOLT, STEPPED HEXAGON HEADED	2		
117-51	K4205001600	DECAL, CAUTION TO MUTILATION	1		
117-52	K0000060202	BOLT, M6-20	2		
117-53	K5206000522	PLATE, FOR FIXING COVER	2		
117-54	K527600041R	PLATE, FOR FIXING COVER	2		
117-55	K0000060502	BOLT, M6-50	2		
117-56	K5073210242	WASHER, SPHC 3.2-10-24	2		
117-57	K0023100251	SETSCREW, M10-25	2		
117-58	K0214100002	WASHER, DISK SPRING TYPE 2 LIGHT LOAD M10	2		
117-59	K285260R70R	REEL CUTTER (CYLINDER), 660-7R	1	7 Blades	
117-60	K0200120002	SPRING WASHER, M12	2		
117-61	K0100120002	NUT, M12	2		
117-62	K9010000120	COVER, FOR REEL WITH MARK (RIGHT)	1		
117-63	K0000060102	BOLT, M6-10	2		
117-64	K285260R50R	REEL CUTTER (CYLINDER), 660-5R	1	5 Blades	
117-65	K4205001650	DECAL, CAUTION TO FRYING OBJECT	1		
117-66	K0041060252	SCREW, COUNTERSUNK HEAD WITH + M6-25	2		
117-67	K4033000380	RUBBER, PLATE STOPPER	1		
117-68	LM283-0101ZR	PLATE, 4.5-40-63	1		

118. Wheel parts



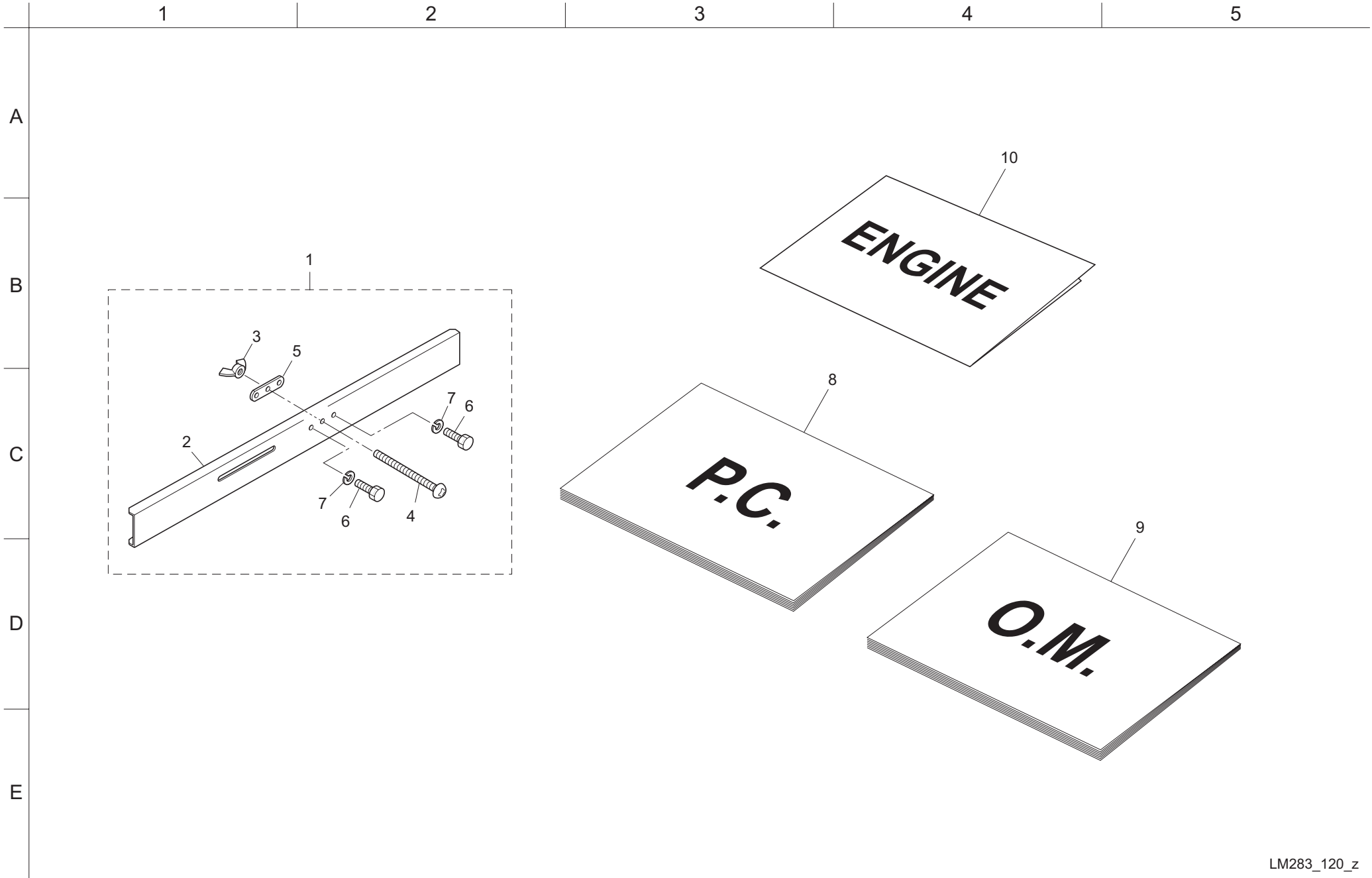


119. Roller Ass'y parts





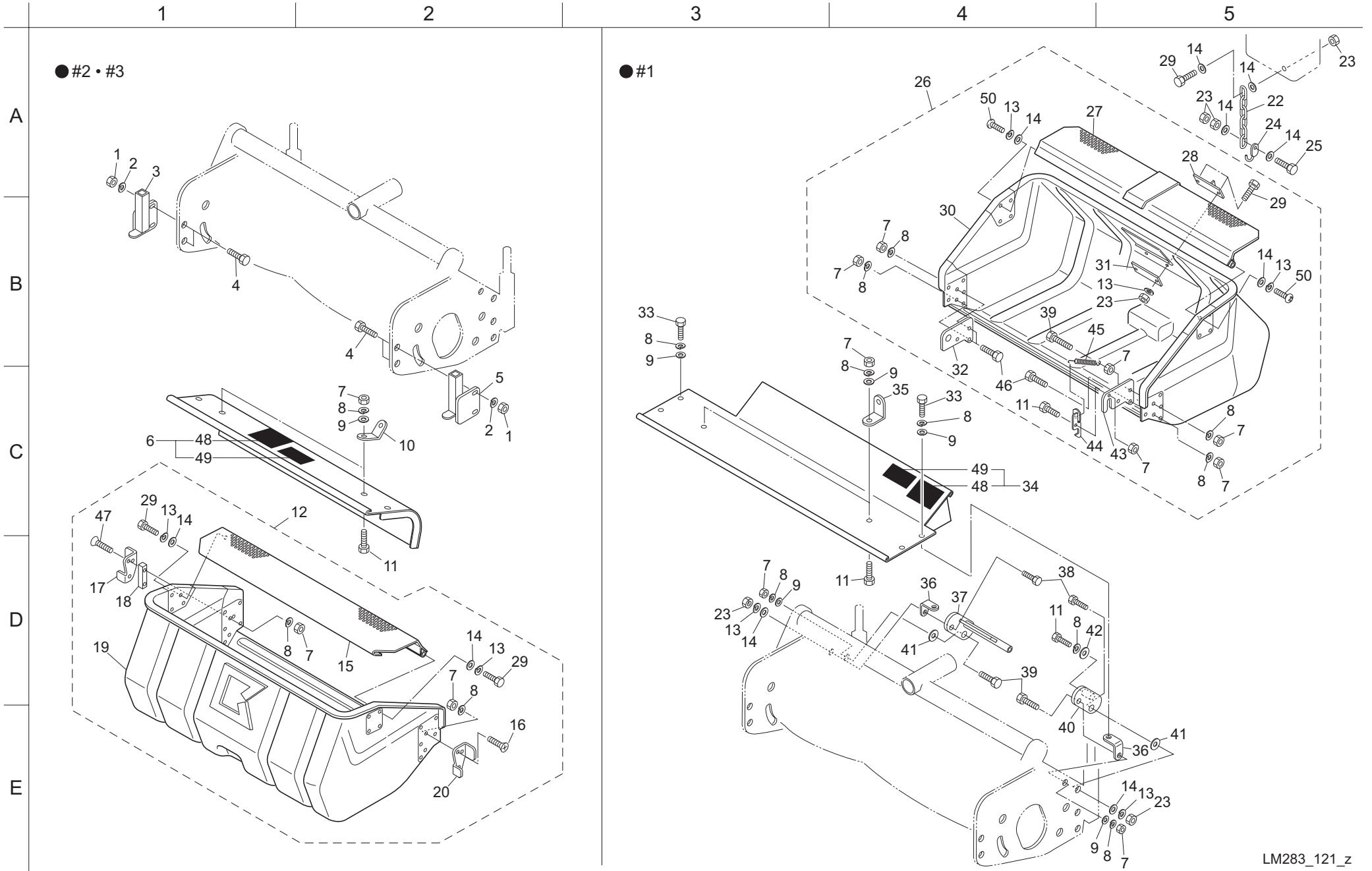
120. Accessory parts





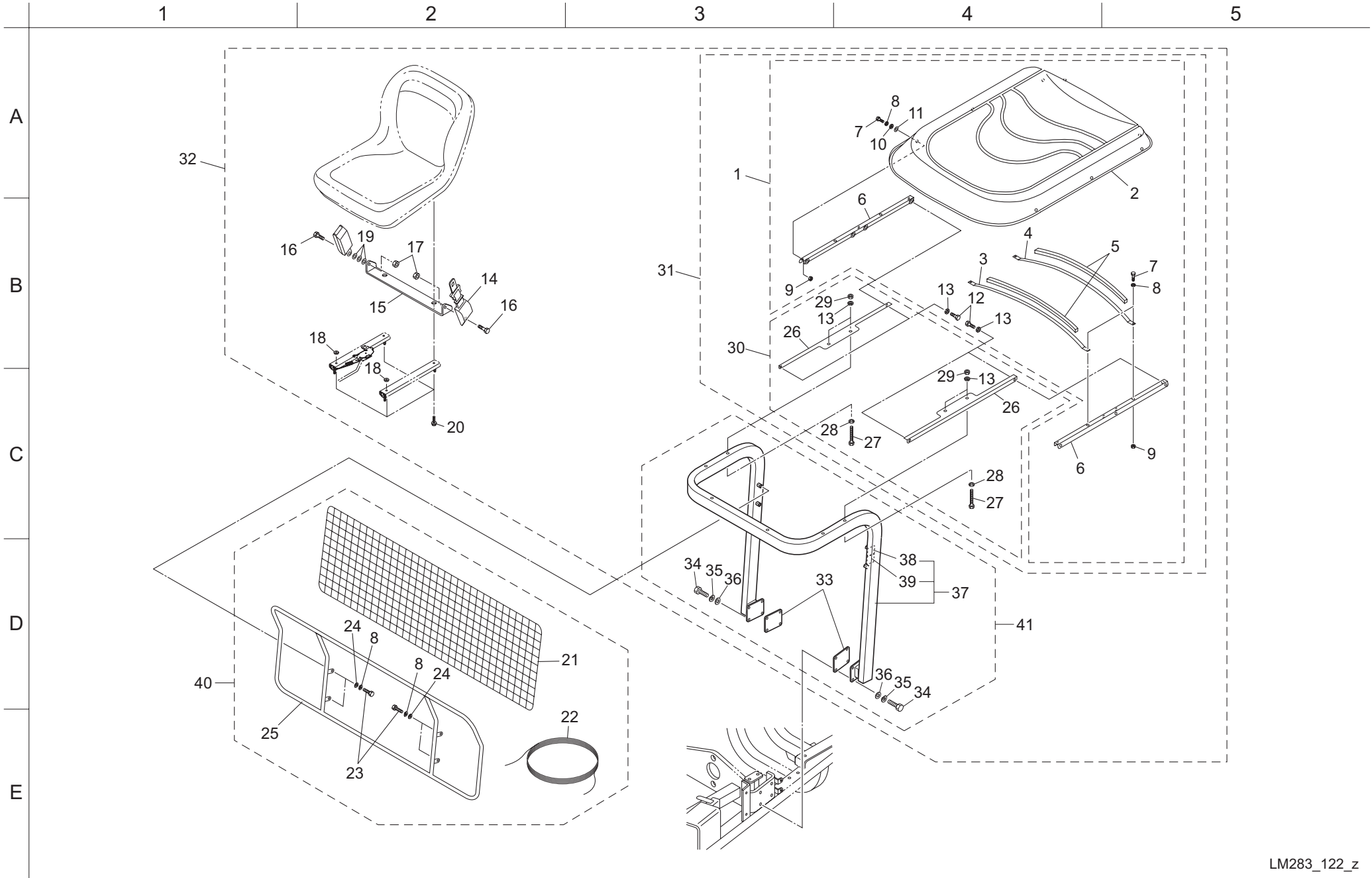


121. Optin (Grass catcher parts)





122. Optin







**BARONESS**  
Quality on Demand

**Postadress:**

TRÄDGÅRDSTEKNIK AB  
Helsingborgsvägen 578, Varalöv  
262 96 ÄNGELHOLM

Telefon : 0431-222 90  
Bg.nr : 5743-7980  
Org.nr : 556409-6120

**URL:**

[www.tradgardsteknik.se](http://www.tradgardsteknik.se)  
E-postadress:  
[info@tradgardsteknik.se](mailto:info@tradgardsteknik.se)